



ELECTRONIC COPY

LABORATORY GROWN DIAMOND REPORT

September 30, 2025	
IGI Report Number	LG737565167
Description	LABORATORY GROWN DIAMOND
Shape and Cutting Style	ROUND BRILLIANT
Measurements	6.53 - 6.56 X 3.97 MM
GRADING RESULTS	
Carat Weight	1.04 CARAT
Color Grade	D
Clarity Grade	VVS 2
Cut Grade	IDEAL

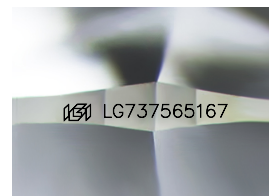
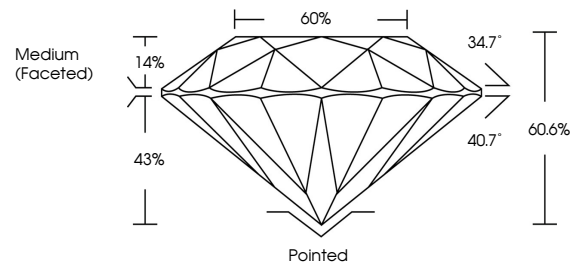
ADDITIONAL GRADING INFORMATION

Polish	EXCELLENT
Symmetry	EXCELLENT
Fluorescence	NONE
Inscription(s)	 LG737565167

Comments: As Grown - No indication of post-growth treatment.
This Laboratory Grown Diamond was created by High Pressure High Temperature (HPHT) growth process.
Type II

LG737565167
Report verification at igi.org

PROPORTIONS



Sample Image Used

COLOR

D E F G H I J Faint Very Light Light

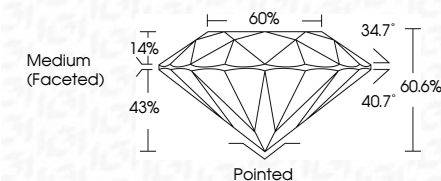
CLARITY

IF	VVS ¹⁻²	VS ¹⁻²	SI ¹⁻²	I ¹⁻³
Internally Flawless	Very Very Slightly Included	Very Slightly Included	Slightly Included	Included

LABORATORY GROWN DIAMOND REPORT



September 30, 2025	
IGI Report Number	LG737565167
Description	LABORATORY GROWN DIAMOND
Shape and Cutting Style	ROUND BRILLIANT
Measurements	6.53 - 6.56 X 3.97 MM
GRADING RESULTS	
Carat Weight	1.04 CARAT
Color Grade	D
Clarity Grade	VVS 2
Cut Grade	IDEAL



ADDITIONAL GRADING INFORMATION

Polish	EXCELLENT
Symmetry	EXCELLENT
Fluorescence	NONE
Inscription(s)	(G) LG737566167
Comments: As Grown - No indication of post-growth treatment.	
This Laboratory Grown Diamond was created by High Pressure High Temperature (HPHT) growth process.	
Type II	



IG



© IGI 2020, International Gemological Institute

FD - 10 20



THIS DOCUMENT WAS PRODUCED WITH THE FOLLOWING SECURITY MEASURES: SPECIAL DOCUMENT PAPER, INK SCREENS, WATERMARK, BACKGROUND DESIGNS, HOLOGRAM AND OTHER SECURITY FEATURES NOT LISTED AND DO EXCEED DOCUMENT SECURITY INDUSTRY GUIDELINES

www.igi.org

September 30, 2025
IGI Report No LG737565167
ROUND BRILLIANT

6.53 - 6.56 X 3.97 MM

0.00 - 0.00 X 0.97 MM
Carat Weight
1.04 CARAT

D

Color Grade

Clarity Grade	WS2
FL	0.00%
IF	0.00%
VS1	0.00%
VS2	0.00%
VVS1	0.00%
VVS2	0.00%
SI1	0.00%
SI2	0.00%
I1	0.00%
I2	0.00%
I3	0.00%
LP	0.00%
NP	0.00%
NT	0.00%
NA	0.00%
NO	0.00%
NC	0.00%
NI	0.00%
NU	0.00%
NR	0.00%
NA	0.00%
NO	0.00%
NC	0.00%
NI	0.00%
NU	0.00%
NR	0.00%

Cut Grade	IDEAL
Depth	60.6%

Table	60%
-------	-----

Girdle

Culet	Pointed

Polished	Excellent
Polish	

Symmetry	EXCELLENT
Fluorescence	NONE

Fluorescence	NONE
Inscription(s)	151 LG737565167

100

Comments:
As Grown - No Indication of post-growth

Treatment

This Laboratory Grown Diamond was created by L'Oréal, Paris, France. L'Oréal

Created by High Pressure High Temperature (HPHT) growth process.

type II