



**INTERNATIONAL  
GEMOLOGICAL  
INSTITUTE**

**ELECTRONIC COPY**

LG741546498  
Report verification at [igi.org](https://igi.org)

LABORATORY GROWN DIAMOND REPORT



October 8, 2025

IGI Report Number **LG741546498**

Description	LABORATORY GROWN DIAMOND
-------------	--------------------------

Shape and Cutting Style **ROUND BRILLIANT**

Measurements 9.28 - 9.35 X 5.57 MM

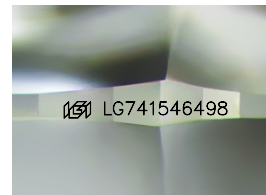
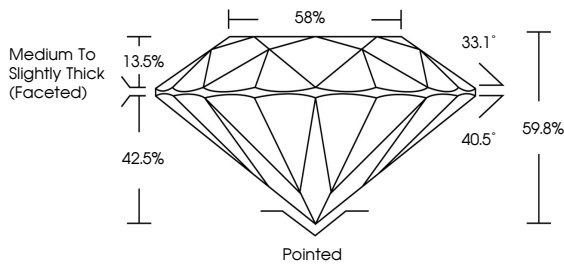
## GRADING RESULTS

**Carat Weight** 2.99 CARATS

Color Grade **D**

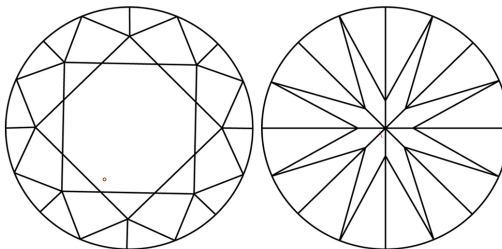
Clarity Grade VS 1

Cut Grade **IDEAL**



Sample Image Used

## CLARITY CHARACTERISTICS



## KEY TO SYMBOLS

Red symbols indicate internal characteristics.  
Green symbols indicate external characteristics.

**COLOR**

D E F G H I J      Faint      Very Light      Light

## CLARITY

FL IF WS<sup>1-2</sup> VS<sup>1-2</sup> S<sup>1-2</sup> |<sup>1-3</sup>

Flawless	Internally Flawless	Very Very Slightly Included	Very Slightly Included	Slightly Included	Included
----------	---------------------	-----------------------------	------------------------	-------------------	----------

### ADDITIONAL GRADING INFORMATION

Polish **EXCELLENT**Symmetry **EXCELLENT**Fluorescence **NONE**Inscription(s)  LG74154649

Comments: This Laboratory Grown Diamond was created by Chemical Vapor Deposition (CVD) growth process.  
Type IIa



© IGI 2020, International Gemological Institute

FD - 10 20



THIS DOCUMENT WAS PRODUCED WITH THE FOLLOWING SECURITY MEASURES: SPECIAL DOCUMENT PAPER, INK SCREENS, WATERMARK, BACKGROUND DESIGNS, HOLOGRAM AND OTHER SECURITY FEATURES NOT LISTED AND DO EXCEED DOCUMENT SECURITY INDUSTRY GUIDELINE

**www.igi.org**



October 8, 2025	GI Report No LG74154698	2.99 CARATS	VS 1	Pointed	Comments: This Fancy Grow Diamond was treated by Chemical Vapor Deposition (CVD) growth process. Type IIa
ROUND BRILLIANT		D	IDEAL	EXCELLENT	
			59.0%	EXCELLENT	
			85%	NONE	
			Medium to Slightly Thick (Faceted)	1691 LG74154698	
9.28 - 9.35 X 5.67 MM	Carat Weight	Color Grade	Clarity Grade	Cut Grade	Fluorescence
			Depth	Table	Symmetry
			Girdle	Polish	Inscriptions(s)