



ELECTRONIC COPY

LABORATORY GROWN DIAMOND REPORT

October 11, 2025	
IGI Report Number	LG741592630
Description	LABORATORY GROWN DIAMOND
Shape and Cutting Style	EMERALD CUT
Measurements	8.61 X 6.02 X 4.06 MM

GRADING RESULTS

Carat Weight	2.06 CARATS
Color Grade	E
Clarity Grade	VVS 2

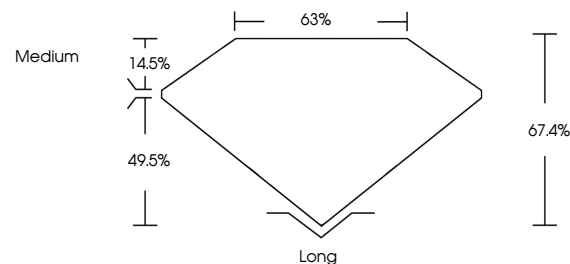
ADDITIONAL GRADING INFORMATION

Polish	EXCELLENT
Symmetry	EXCELLENT
Fluorescence	NONE
Inscription(s)	 LG741592630

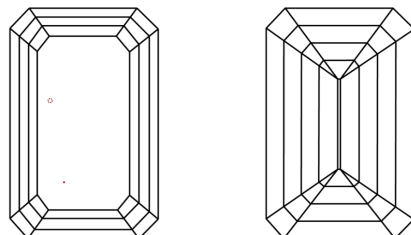
Comments: This Laboratory Grown Diamond was created by Chemical Vapor Deposition (CVD) growth process.
Type IIa

LG741592630
Report verification at igi.org

PROPORTIONS

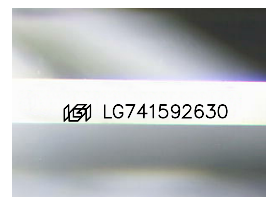


CLARITY CHARACTERISTICS



KEY TO SYMBOLS

Red symbols indicate internal characteristics.
Green symbols indicate external characteristics.



Sample Image Used

COLOR

D E F G H I J Faint Very Light Light

CLARITY

FL	IF	VVS ¹⁻²	VS ¹⁻²	SI ¹⁻²	I ¹⁻³
Flawless	Internally Flawless	Very Very Slightly Included	Very Slightly Included	Slightly Included	Included

LABORATORY GROWN DIAMOND REPORT




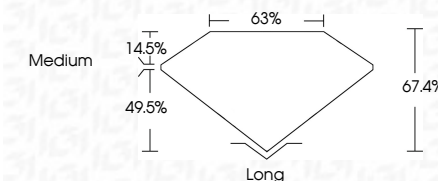
October 11, 2025	
IGI Report Number	LG741592630
Description	LABORATORY GROWN DIAMOND
Shape and Cutting Style	EMERALD CUT
Measurements	8.61 X 6.02 X 4.06 MM

GRADING RESULTS

Carat Weight	2.06 CARATS
Color Grade	E
Clarity Grade	VVS 2

ADDITIONAL GRADING INFORMATION

Polish	EXCELLENT
Symmetry	EXCELLENT
Fluorescence	NONE
Inscription(s)	 LG741592630
<p>Comments: This Laboratory Grown Diamond was created by Chemical Vapor Deposition (CVD) growth process.</p> <p>Type IIa</p>	



October 11, 2025
GI Report No LG741592630

3.61 CT X 6.02 X 4.06 MM	2.06 CARATS
Carat Weight	E
Color Grade	VVS 2
Clarity Grade	67.4%
Depth	68%
Table	Medium
Grade	Long
Culet	EXCELLENT
Polish	EXCELLENT
Symmetry	NONE
Fluorescence	None / Very Slight

Comments:
This Laboratory Grown Diamond was created by Chemical Vapor Deposition (CVD) growth process.

© IGI 2020, International Gemological Institute

FD - 10 20

www.igi.org

THIS DOCUMENT WAS PRODUCED WITH THE FOLLOWING SECURITY MEASURES: SPECIAL DOCUMENT PAPER, INK SCREENS, WATERMARK, BACKGROUND DESIGNS, HOLOGRAM AND OTHER SECURITY FEATURES NOT LISTED AND DO EXCEED DOCUMENT SECURITY INDUSTRY GUIDELINES