



ELECTRONIC COPY

LABORATORY GROWN DIAMOND REPORT

October 11, 2025	
IGI Report Number	LG742517540
Description	LABORATORY GROWN DIAMOND
Shape and Cutting Style	ROUND BRILLIANT
Measurements	8.74 - 8.77 X 5.27 MM

GRADING RESULTS

Carat Weight	2.51 CARATS
Color Grade	D
Clarity Grade	VS 1
Cut Grade	IDEAL

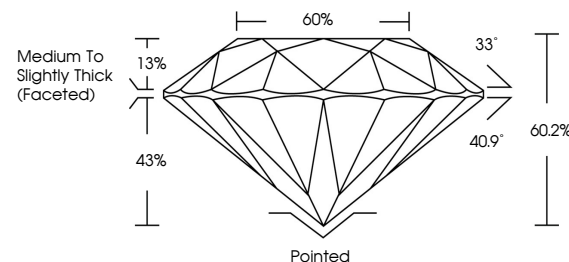
ADDITIONAL GRADING INFORMATION

Polish	EXCELLENT
Symmetry	EXCELLENT
Fluorescence	NONE
Inscription(s)	15 LG742517540

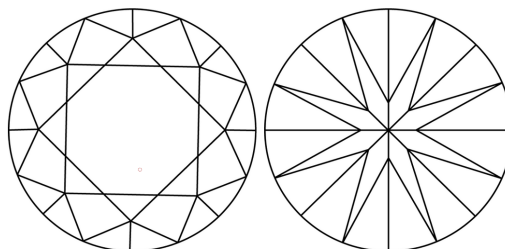
Comments: This Laboratory Grown Diamond was created by Chemical Vapor Deposition (CVD) growth process.
Type IIa

LG742517540
Report verification at lgi.org

PROPORTIONS

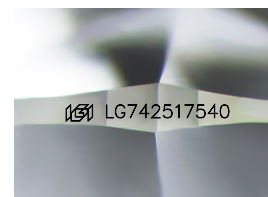


CLARITY CHARACTERISTICS



KEY TO SYMBOLS

Red symbols indicate internal characteristics.
Green symbols indicate external characteristics.



Sample Image Used

COLOR

D E F G H I J Faint Very Light Light

CLARITY

FL	IF	VVS ¹⁻²	VS ¹⁻²	SI ¹⁻²	I ¹⁻³
Flawless	Internally Flawless	Very Very Slightly Included	Very Slightly Included	Slightly Included	Included

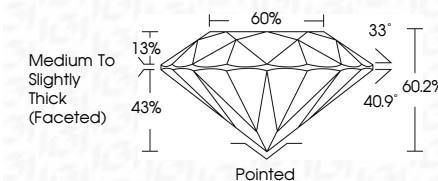
LABORATORY GROWN DIAMOND REPORT



October 11, 2025	
IGI Report Number	LG742517540
Description	LABORATORY GROWN DIAMOND
Shape and Cutting Style	ROUND BRILLIANT
Measurements	8.74 - 8.77 X 5.27 MM

GRADING RESULTS

Carat Weight	2.51 CARATS
Color Grade	D
Clarity Grade	VS 1
Cut Grade	IDEAL



ADDITIONAL GRADING INFORMATION

Polish	EXCELLENT
Symmetry	EXCELLENT
Fluorescence	NONE
Inscription(s)	(修) LG742517540
Comments: This Laboratory Grown Diamond was created by Chemical Vapor Deposition (CVD) growth process.	
Type Ila	



© IGI 2020, International Gemological Institute

FD - 10 20



THIS DOCUMENT WAS PRODUCED WITH THE FOLLOWING SECURITY MEASURES: SPECIAL DOCUMENT PAPER, INK SCREENS, WATERMARK, BACKGROUND DESIGNS, HOLOGRAM AND OTHER SECURITY FEATURES NOT LISTED AND DO EXCEED DOCUMENT SECURITY INDUSTRY GUIDELINES.

www.igi.org

October 11, 2025	2.51 CARATS
G1 Report No. LG240517540	D
ROUND BRILLIANT	VSI
	IDEAL
	60.2%
	65%
	Medium to Slightly Thick (Faceted)
	Polished
	EXCELLENT
	SYMMETRY
	FLUORESCENCE
	INSCRIPTION(S)
	NONE
	1661 LG240517540

Comments:
 This is a Chemically Grown Diamond was
 identified by Chemical Vapor Deposition
 (CVD) growth process.
 Type IIa