



**ELECTRONIC COPY**

## LABORATORY GROWN DIAMOND REPORT

LG742531594  
Report verification at [igi.org](https://igi.org)

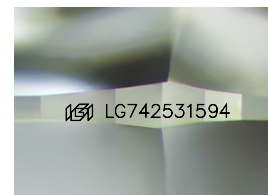
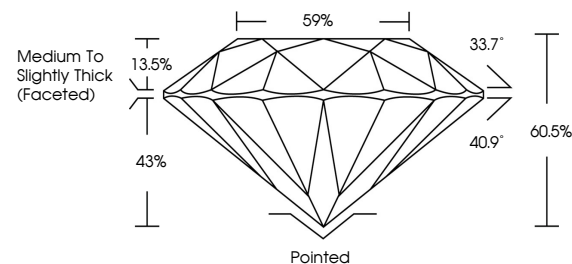
October 14, 2025	
IGI Report Number	LG742531594
Description	LABORATORY GROWN DIAMOND
Shape and Cutting Style	ROUND BRILLIANT
Measurements	9.47 - 9.50 X 5.74 MM
GRADING RESULTS	
Carat Weight	3.16 CARATS
Color Grade	E
Clarity Grade	VS 1
Cut Grade	IDEAL

### ADDITIONAL GRADING INFORMATION

Polish	EXCELLENT
Symmetry	EXCELLENT
Fluorescence	NONE
Inscription(s)	151 LG742531594

Comments: This Laboratory Grown Diamond was created by Chemical Vapor Deposition (CVD) growth process.  
Type IIa

## PROPORTIONS



Sample Image Used

## COLOR

D E F G H I J Faint Very Light Light

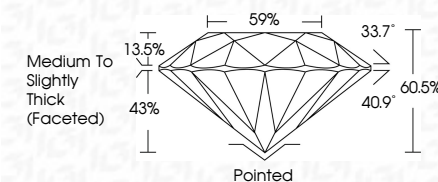
## CLARITY

FL	IF	VVS <sup>1-2</sup>	VS <sup>1-2</sup>	SI <sup>1-2</sup>	I <sup>1-3</sup>
Flawless	Internally Flawless	Very Very Slightly Included	Very Slightly Included	Slightly Included	Included

## LABORATORY GROWN DIAMOND REPORT



October 14, 2025	
IGI Report Number	LG742531594
Description	LABORATORY GROWN DIAMOND
Shape and Cutting Style	ROUND BRILLIANT
Measurements	9.47 - 9.50 X 5.74 MM
GRADING RESULTS	
Carat Weight	3.16 CARATS
Color Grade	E
Clarity Grade	VS 1
Cut Grade	IDEAL



### ADDITIONAL GRADING INFORMATION

Polish	EXCELLENT
Symmetry	EXCELLENT
Fluorescence	NONE
Inscription(s)	 LG742531594
Comments: This Laboratory Grown Diamond was created by Chemical Vapor Deposition (CVD) growth process.	
Type IIa	



IG



© IGI 2020, International Gemological Institute

FD - 10 20



THIS DOCUMENT WAS PRODUCED WITH THE FOLLOWING SECURITY MEASURES: SPECIAL DOCUMENT PAPER, INK SCREENS, WATERMARK, BACKGROUND DESIGNS, HOLOGRAM, AND OTHER SECURITY FEATURES NOT LISTED AND DO EXCEED DOCUMENT SECURITY INDUSTRY GUIDELINES.

**www.igi.org**

October 14, 2025  
GI Report No LG742531594  
ROUND BRILLIANT

<b>Color</b>	<b>Carat Weight</b>	<b>3.16 CARATS</b>
<b>Clarity</b>	<b>Cut Grade</b>	<b>VS 1</b>
<b>Depth</b>	<b>Girdle</b>	<b>IDEAL</b>
<b>Table</b>	<b>Symmetry</b>	<b>60.0%</b>
<b>Girdle</b>	<b>Fluorescence</b>	<b>59%</b>
<b>Culet</b>	<b>Polish</b>	<b>Medium To Slightly Thick (Faceted)</b>
<b>Weight</b>	<b>Pavilion</b>	<b>Pointed</b>
<b>Measurements</b>	<b>Finish</b>	<b>EXCELLENT</b>
<b>Comments</b>	<b>Overall</b>	<b>NONE</b>
<b>Notes</b>	<b>Grading</b>	<b>gem 127 netusa</b>

**Comments:**  
This Laboratory Grown Diamond was  
created by Chemical Vapor Deposition  
(CVD) growth process.