



**ELECTRONIC COPY**

LG743512180  
Report verification at igi.org



October 13, 2025

IGI Report Number **LG743512180**

Description **LABORATORY GROWN DIAMOND**

Shape and Cutting Style **CUSHION BRILLIANT**

Measurements **11.66 X 7.65 X 4.77 MM**

**GRADING RESULTS**

Carat Weight **3.34 CARATS**

Color Grade **E**

Clarity Grade **VS 1**

October 13, 2025  
IGI Report Number **LG743512180**  
Description **LABORATORY GROWN DIAMOND**  
Shape and Cutting Style **CUSHION BRILLIANT**  
Measurements **11.66 X 7.65 X 4.77 MM**

**GRADING RESULTS**

Carat Weight **3.34 CARATS**

Color Grade **E**

Clarity Grade **VS 1**

**ADDITIONAL GRADING INFORMATION**

Polish **EXCELLENT**

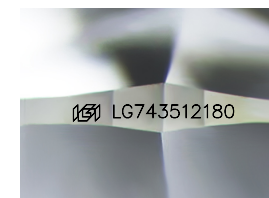
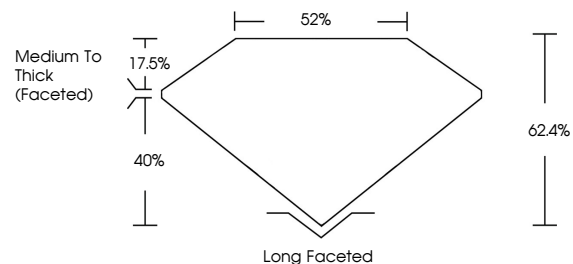
Symmetry **EXCELLENT**

Fluorescence **NONE**

Inscription(s) **LG743512180**

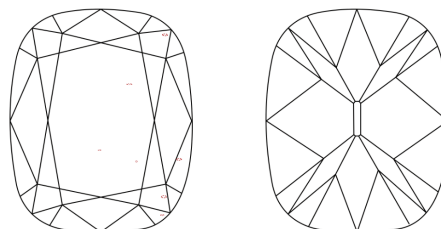
Comments: This Laboratory Grown Diamond was created by Chemical Vapor Deposition (CVD) growth process.  
Type IIa

**PROPORTIONS**



Sample Image Used

**CLARITY CHARACTERISTICS**



**KEY TO SYMBOLS**

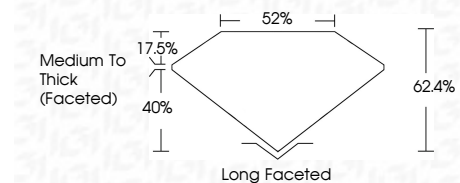
Red symbols indicate internal characteristics.  
Green symbols indicate external characteristics.

**COLOR**

D E F G H I J Faint Very Light Light

**CLARITY**

FL	IF	VS <sup>1-2</sup>	VS <sup>1-2</sup>	SI <sup>1-2</sup>	I <sup>1-3</sup>
Flawless	Internally Flawless	Very Very Slightly Included	Very Slightly Included	Slightly Included	Included



**ADDITIONAL GRADING INFORMATION**

Polish **EXCELLENT**

Symmetry **EXCELLENT**

Fluorescence **NONE**

Inscription(s) **LG743512180**

Comments: This Laboratory Grown Diamond was created by Chemical Vapor Deposition (CVD) growth process.  
Type IIa



**IGI**



October 13, 2025  
IGI Report No **LG743512180**  
**CUSHION BRILLIANT**  
**3.34 CARATS**  
E  
Carat Weight **3.34 CARATS**  
Color Grade **E**  
Clarity Grade **VS 1**  
Depth **62.4%**  
Table **52%**  
Girdle **Medium To Thick (Faceted)**  
Culet **Long Faceted**  
Polish **EXCELLENT**  
Symmetry **EXCELLENT**  
Fluorescence **NONE**  
Inscription(s) **LG743512180**  
Comments: This Laboratory Grown Diamond was created by Chemical Vapor Deposition (CVD) growth process.  
Type IIa