



ELECTRONIC COPY

LABORATORY GROWN DIAMOND REPORT

October 15, 2025
 IGI Report Number **LG743522546**
 Description **LABORATORY GROWN DIAMOND**
 Shape and Cutting Style **CUSHION MODIFIED BRILLIANT**
 Measurements **9.24 X 6.87 X 4.41 MM**

GRADING RESULTS

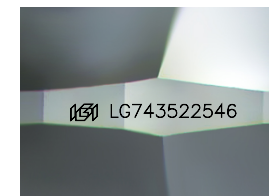
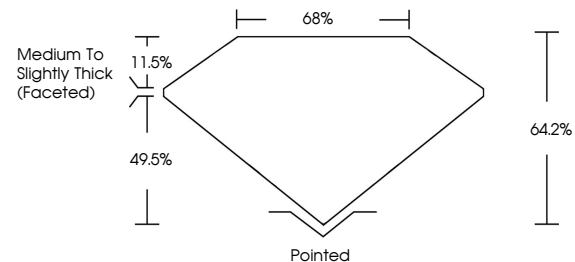
Carat Weight **2.38 CARATS**
 Color Grade **E**
 Clarity Grade **VS 2**

ADDITIONAL GRADING INFORMATION

Polish **EXCELLENT**
 Symmetry **EXCELLENT**
 Fluorescence **NONE**
 Inscription(s) **IGI LG743522546**

Comments: This Laboratory Grown Diamond was created by Chemical Vapor Deposition (CVD) growth process. Type IIa

PROPORTIONS



Sample Image Used

COLOR

D E F G H I J Faint Very Light Light

CLARITY

FL	IF	VS ¹⁻²	VS ¹⁻²	SI ¹⁻²	I ¹⁻³
Flawless	Internally Flawless	Very Very Slightly Included	Very Slightly Included	Slightly Included	Included



October 15, 2025
 IGI Report Number **LG743522546**
 Description **LABORATORY GROWN DIAMOND**
 Shape and Cutting Style **CUSHION MODIFIED BRILLIANT**
 Measurements **9.24 X 6.87 X 4.41 MM**

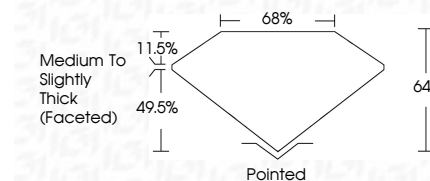
GRADING RESULTS

Carat Weight **2.38 CARATS**
 Color Grade **E**
 Clarity Grade **VS 2**

ADDITIONAL GRADING INFORMATION

Polish **EXCELLENT**
 Symmetry **EXCELLENT**
 Fluorescence **NONE**
 Inscription(s) **IGI LG743522546**

Comments: This Laboratory Grown Diamond was created by Chemical Vapor Deposition (CVD) growth process. Type IIa



October 15, 2025
 IGI Report No LG743522546
CUSHION MODIFIED BRILLIANT

9.24 X 6.87 X 4.41 MM

2.38 CARATS
 E
 VS 2
 64.2%
 68%

Medium to Slightly Thick (Faceted)

Pointed
 EXCELLENT
 EXCELLENT
 NONE
 IGI LG743522546

Comments: This Laboratory Grown Diamond was created by Chemical Vapor Deposition (CVD) growth process. Type IIa

