

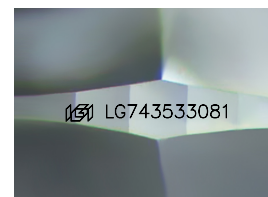
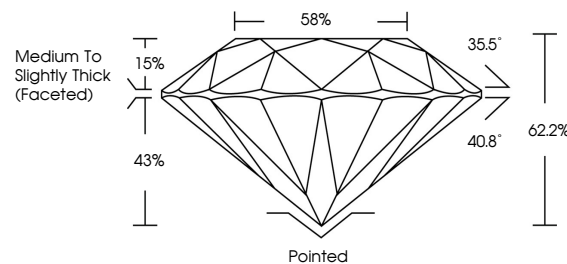


ELECTRONIC COPY

LABORATORY GROWN DIAMOND REPORT

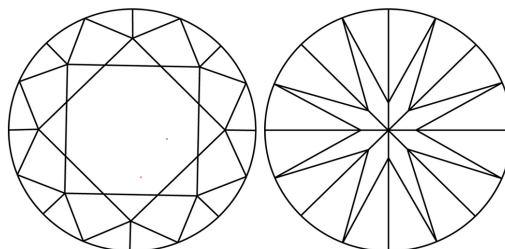
LG743533081
Report verification at igi.org

PROPORTIONS



Sample Image Used

CLARITY CHARACTERISTICS



KEY TO SYMBOLS

Red symbols indicate internal characteristics.
Green symbols indicate external characteristics.

COLOR

D E F G H I J Faint Very Light Light

CLARITY

FL	IF	VVS ¹⁻²	VS ¹⁻²	SI ¹⁻²	I ¹⁻³
Flawless	Internally Flawless	Very Very Slightly Included	Very Slightly Included	Slightly Included	Included

LABORATORY GROWN DIAMOND REPORT



October 14, 2025

IGI Report Number **LG743533081**Description **LABORATORY GROWN DIAMOND**Shape and Cutting Style **ROUND BRILLIANT**

Measurements 9.14 - 9.18 X 5.70 MM

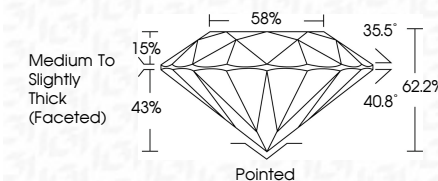
GRADING RESULTS

Carat Weight **3.01 CARATS**

Color Grade E

Clarity Grade **VS 2**

Cut Grade **IDEAL**



ADDITIONAL GRADING INFORMATION

Polish **EXCELLENT**Symmetry **EXCELLENT**Fluorescence **NONE**Inscription(s)  LG743533081

Comments: This Laboratory Grown Diamond was created by Chemical Vapor Deposition (CVD) growth process.
Type IIa



© IGI 2020, International Gemological Institute

FD - 10 20

www.igi.org

THIS DOCUMENT WAS PRODUCED WITH THE FOLLOWING SECURITY MEASURES: SPECIAL DOCUMENT PAPER, INK SCREENS, WATERMARK, BACKGROUND DESIGNS, HOLOGRAM AND OTHER SECURITY FEATURES NOT LISTED AND DO EXCEED DOCUMENT SECURITY INDUSTRY GUIDELINES

October 14, 2025
GI Report No LG743533081
ROUND BRILLIANT

3.01 CARATS	Carat Weight	9.14 - 9.18 X 5.70 MM
E	Color Grade	
VVS 2	Clarity Grade	
IDP AL	Cut Grade	
62.2%	Depth	
58%	Table	
Medium to Slightly Thick (Faceted)	Grade	
Pointed	Culet	
EXCELLENT	Polish	
EXCELLENT	Symmetry	
NONE	Fluorescence	
4mm / 27.883300		

Comments:
This Laboratory Grown Diamond was
created by Chemical Vapor Deposition
(CVD) growth process.