



ELECTRONIC COPY

LG747533518
Report verification at igi.org



November 5, 2025
IGI Report Number LG747533518
Description LABORATORY GROWN DIAMOND
Shape and Cutting Style ROUND BRILLIANT
Measurements 9.27 - 9.33 X 5.84 MM
GRADING RESULTS
Carat Weight 3.06 CARATS
Color Grade E
Clarity Grade VVS 2
Cut Grade EXCELLENT

November 5, 2025
IGI Report Number LG747533518
Description LABORATORY GROWN DIAMOND
Shape and Cutting Style ROUND BRILLIANT
Measurements 9.27 - 9.33 X 5.84 MM

GRADING RESULTS

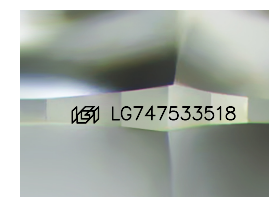
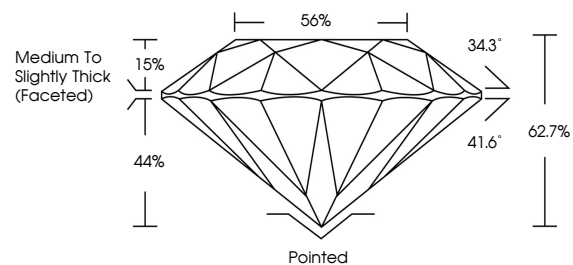
Carat Weight 3.06 CARATS
Color Grade E
Clarity Grade VVS 2
Cut Grade EXCELLENT

ADDITIONAL GRADING INFORMATION

Polish EXCELLENT
Symmetry EXCELLENT
Fluorescence NONE
Inscription(s) IGI LG747533518

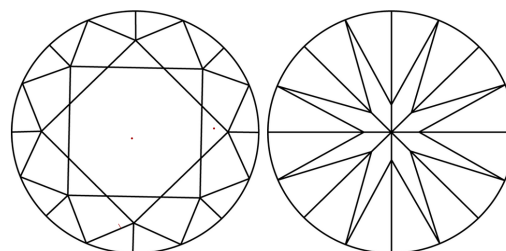
Comments: This Laboratory Grown Diamond was created by Chemical Vapor Deposition (CVD) growth process. Type IIa

PROPORTIONS



Sample Image Used

CLARITY CHARACTERISTICS



KEY TO SYMBOLS

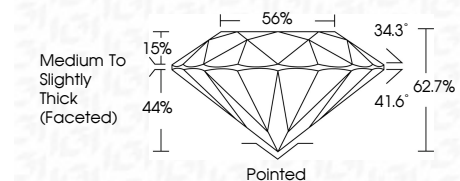
Red symbols indicate internal characteristics.
Green symbols indicate external characteristics.

COLOR

D E F G H I J Faint Very Light Light

CLARITY

FL IF VVS 1-2 VS 1-2 SI 1-2 I 1-3
Flawless Internally Flawless Very Very Slightly Included Very Slightly Included Slightly Included Included



ADDITIONAL GRADING INFORMATION

Polish EXCELLENT
Symmetry EXCELLENT
Fluorescence NONE
Inscription(s) IGI LG747533518
Comments: This Laboratory Grown Diamond was created by Chemical Vapor Deposition (CVD) growth process. Type IIa



November 5, 2025
IGI Report No LG747533518
ROUND BRILLIANT
9.27 - 9.33 X 5.84 MM
3.06 CARATS E
Color Grade EXCELLENT
Clarity Grade VVS 2
Depth 62.7%
Table 56%
Medium To Slightly Thick (Faceted)
Cutler Pointed
Polish EXCELLENT
Symmetry EXCELLENT
Fluorescence NONE
Inscription(s) IGI LG747533518
Comments: This Laboratory Grown Diamond was created by Chemical Vapor Deposition (CVD) growth process. Type IIa