



ELECTRONIC COPY

LABORATORY GROWN DIAMOND REPORT

November 8, 2025	
IGI Report Number	LG747583579
Description	LABORATORY GROWN DIAMOND
Shape and Cutting Style	PRINCESS CUT
Measurements	6.41 X 6.32 X 4.60 MM

GRADING RESULTS

Carat Weight	1.63 CARAT
Color Grade	F
Clarity Grade	VVS 1

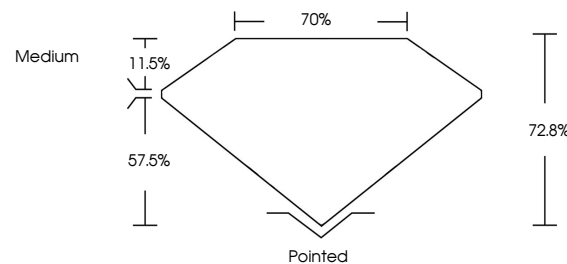
ADDITIONAL GRADING INFORMATION

Polish	EXCELLENT
Symmetry	EXCELLENT
Fluorescence	NONE
Inscription(s)	 LG747583579

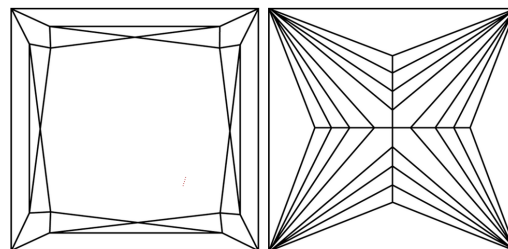
Comments: This Laboratory Grown Diamond was created by Chemical Vapor Deposition (CVD) growth process.
Type IIa

LG747583579
Report verification at igi.org

PROPORTIONS

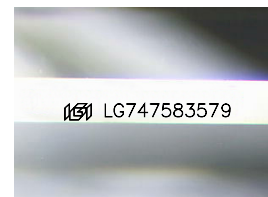


CLARITY CHARACTERISTICS



KEY TO SYMBOLS

Red symbols indicate internal characteristics.
Green symbols indicate external characteristics.



Sample Image Used

COLOR

D E F G H I J Faint Very Light Light

CLARITY

FL	IF	VVS ¹⁻²	VS ¹⁻²	SI ¹⁻²	I ¹⁻³
Flawless	Internally Flawless	Very Very Slightly Included	Very Slightly Included	Slightly Included	Included

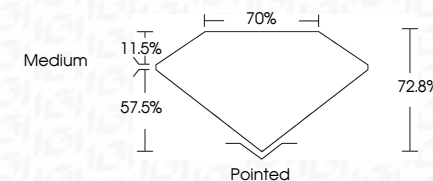
LABORATORY GROWN DIAMOND REPORT



November 8, 2025	
IGI Report Number	LG747583579
Description	LABORATORY GROWN DIAMOND
Shape and Cutting Style	PRINCESS CUT
Measurements	6.41 X 6.32 X 4.60 MM

GRADING RESULTS

Carat Weight	1.63 CARAT
Color Grade	F
Clarity Grade	VVS 1



ADDITIONAL GRADING INFORMATION

Polish	EXCELLENT
Symmetry	EXCELLENT
Fluorescence	NONE
Inscription(s)	 LG747583579
<p>Comments: This Laboratory Grown Diamond was created by Chemical Vapor Deposition (CVD) growth process.</p> <p>Type IIa</p>	



IG



© IGI 2020, International Gemological Institute

FD - 10 20

www.igi.org

THIS DOCUMENT WAS PRODUCED WITH THE FOLLOWING SECURITY MEASURES: SPECIAL DOCUMENT PAPER, INK SCREENS, WATERMARK, BACKGROUND DESIGNS, HOLOGRAM AND OTHER SECURITY FEATURES NOT LISTED AND DO EXCEED DOCUMENT SECURITY INDUSTRY GUIDELINES

November 8, 2025
GI Report No LG747583579
BRINCESS CITE

1.63 CARAT	1.63 CARAT
F	F
VVS 1	VVS 1
72.8%	72.8%
70%	70%
Medium	Medium
Pointed	Pointed
EXCELLENT	EXCELLENT
EXCELLENT	EXCELLENT
NONE	NONE
None	None
1.63 CARAT	1.63 CARAT

Comments:
This Laboratory Grown Diamond was
created by Chemical Vapor Deposition
(CVD) growth process.