



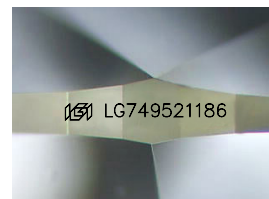
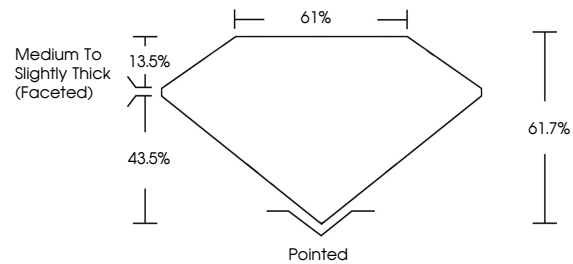
**INTERNATIONAL  
GEMOLOGICAL  
INSTITUTE**

**ELECTRONIC COPY**

## LABORATORY GROWN DIAMOND REPORT

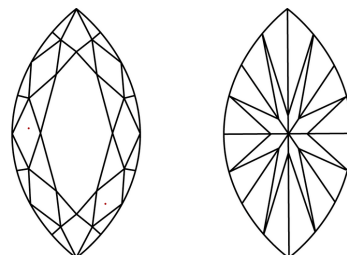
LG749521186  
Report verification at [igi.org](https://www.igi.org)

## PROPORTIONS



Sample Image Used

## CLARITY CHARACTERISTICS



## KEY TO SYMBOLS

Red symbols indicate internal characteristics.  
Green symbols indicate external characteristics.

**COLOR**

D E F G H I J Faint Very Light Light

## CLARITY

FL	IF	VVS <sup>1-2</sup>	VS <sup>1-2</sup>	SI <sup>1-2</sup>	I <sup>1-3</sup>
Flawless	Internally Flawless	Very Very Slightly Included	Very Slightly Included	Slightly Included	Included



© IGI 2020, International Gemological Institute

FD - 10 20

## LABORATORY GROWN DIAMOND REPORT



November 14, 2025

IGI Report Number **LG749521186**

Description	LABORATORY GROWN DIAMOND
-------------	--------------------------

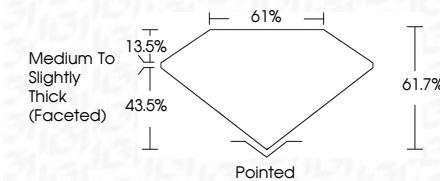
Shape and Cutting Style **MARQUISE BRILLIANT**

Measurements 13.56 X 6.53 X 4.03 MM

## GRADING RESULTS

Carat Weight **2.04 CARATS**

Color Grade **D**

Clarity Grade **VVS 2**

### ADDITIONAL GRADING INFORMATION

Polish **EXCELLENT**Symmetry **EXCELLENT**Fluorescence **NONE**Inscription(s)  LG74952118

Comments: This Laboratory Grown Diamond was created by Chemical Vapor Deposition (CVD) growth process.  
Type IIa



IG

November 14, 2025	Q1 Report No LG749621186	2.04 CARATS	VVS 2	61.7%	61%	Polished	\$89,167.49/ct.21186 NONE NONE	Comments: The Laboratory Grown Diamond was created by Chemical Vapor Deposition (CVD) growth process. Type IIa
MAQUILISE BRILLIANT	13.55 X 6.53 X 4.08 MM	Color Grade	Clarity Grade	Depth	Table	Culet		
		Carat Weight			Girdle	Polish		
					Girdle	Symmetry		
						Fluorescence	Inscriptions(s)	

**www.igi.org**