



**ELECTRONIC COPY**

## LABORATORY GROWN DIAMOND REPORT

November 14, 2025	
IGI Report Number	LG749549000
Description	LABORATORY GROWN DIAMOND
Shape and Cutting Style	CUT CORNERED RECTANGULAR MODIFIED BRILLIANT
Measurements	11.20 X 7.77 X 5.29 MM

## GRADING RESULTS

Carat Weight	3.94 CARATS
Color Grade	F
Clarity Grade	VS 1

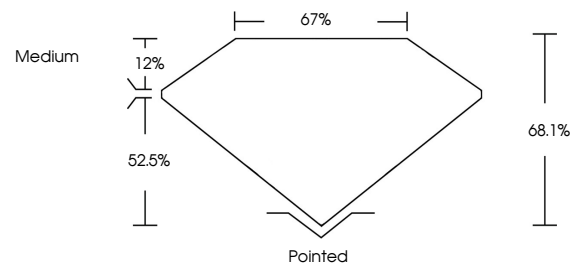
### ADDITIONAL GRADING INFORMATION

Polish	EXCELLENT
Symmetry	EXCELLENT
Fluorescence	NONE
Inscription(s)	 LG749549000

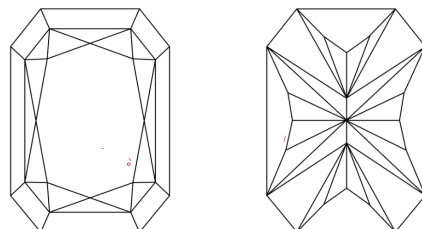
Comments: This Laboratory Grown Diamond was created by Chemical Vapor Deposition (CVD) growth process.  
Type IIa

LG749549000  
Report verification at [igi.org](https://igi.org)

## PROPORTIONS

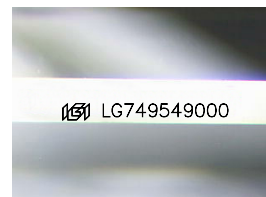


## CLARITY CHARACTERISTICS



## KEY TO SYMBOLS

Red symbols indicate internal characteristics.  
Green symbols indicate external characteristics.



Sample Image Used

## COLOR

D E F G H I J Faint Very Light Light

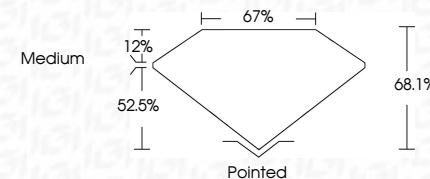
## CLARITY

FL	IF	VVS <sup>1-2</sup>	VS <sup>1-2</sup>	SI <sup>1-2</sup>	I <sup>1-3</sup>
Flawless	Internally Flawless	Very Very Slightly Included	Very Slightly Included	Slightly Included	Included

## LABORATORY GROWN DIAMOND REPORT



November 14, 2025	
IGI Report Number	LG749549000
Description	LABORATORY GROWN DIAMOND
Shape and Cutting Style	CUT CORNERED RECTANGULAR MODIFIED BRILLIANT
Measurements	11.20 X 7.77 X 5.29 MM
GRADING RESULTS	
Carat Weight	3.94 CARATS
Color Grade	F
Clarity Grade	VS 1



### ADDITIONAL GRADING INFORMATION

Polish	EXCELLENT
Symmetry	EXCELLENT
Fluorescence	NONE
Inscription(s)	<del>LG</del> LG749549000
Comments: This Laboratory Grown Diamond was created by Chemical Vapor Deposition (CVD) growth process. Type IIa	



© IGI 2020, International Gemological Institute

FD - 10 20

**www.igi.org**



THIS DOCUMENT WAS PRODUCED WITH THE FOLLOWING SECURITY MEASURES: SPECIAL DOCUMENT PAPER, INK SCREENS, WATERMARK, BACKGROUND DESIGNS, HOLOGRAM AND OTHER SECURITY FEATURES NOT LISTED AND DO EXCEED DOCUMENT SECURITY INDUSTRY GUIDELINES

November 14, 2025	GI Report No LG74964900	CU CORNERED RECT. MODIFIED BRILLIANT
11.20 X 7.77 X 5.29 MM	Color Weight	3.94 CARATS
Clarity Grade	F	Vs 1
Depth	68.1%	68.1%
Table	67%	67%
Girdle	Medium	Medium
Quiet	Polished	Polished
Polish	Excellent	Excellent
Symmetry	Excellent	Excellent
Fluorescence	NONE	NONE
Inscriptions(s)	689 LG74964900	689 LG74964900
Comments:	This Laboratory Grown Diamond was created by Chemical Vapor Deposition (CVD) growth process. type IIa	