



**ELECTRONIC COPY**

LG750564283  
Report verification at igi.org



December 3, 2025

IGI Report Number **LG750564283**

Description **LABORATORY GROWN DIAMOND**

Shape and Cutting Style **EMERALD CUT**

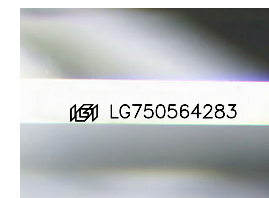
Measurements **11.98 X 8.51 X 5.57 MM**

**GRADING RESULTS**

Carat Weight **5.60 CARATS**

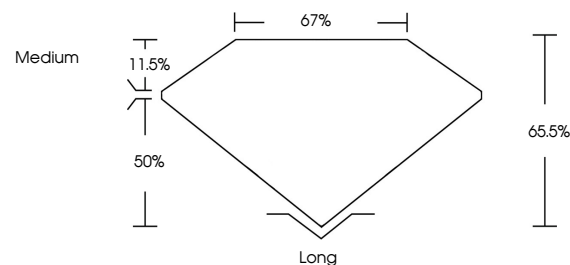
Color Grade **F**

Clarity Grade **VVS 2**

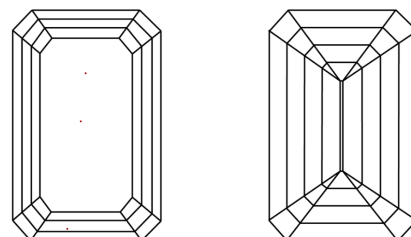


Sample Image Used

**PROPORTIONS**



**CLARITY CHARACTERISTICS**



**KEY TO SYMBOLS**

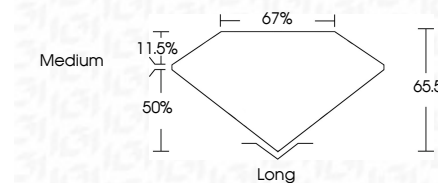
Red symbols indicate internal characteristics.  
Green symbols indicate external characteristics.

**COLOR**

D E F G H I J Faint Very Light Light

**CLARITY**

FL	IF	VVS <sup>1-2</sup>	VS <sup>1-2</sup>	SI <sup>1-2</sup>	I <sup>1-3</sup>
Flawless	Internally Flawless	Very Very Slightly Included	Very Slightly Included	Slightly Included	Included



**ADDITIONAL GRADING INFORMATION**

Polish **EXCELLENT**

Symmetry **EXCELLENT**

Fluorescence **NONE**

Inscription(s) **IGI LG750564283**

Comments: This Laboratory Grown Diamond was created by Chemical Vapor Deposition (CVD) growth process. Type IIa



**IGI**



December 3, 2025	5.60 CARATS	F	VVS 2	65.5%	67%	Medium	Long
IGI Report No LG750564283	11.98 X 8.51 X 5.57 MM	EMERALD CUT	Color Grade	Depth	Table	Girdle	Culet
			Symmetry	Fluorescence	Inscription(s)		Polish
			EXCELLENT	NONE	IGI LG750564283		EXCELLENT
			EXCELLENT				EXCELLENT

Comments: This Laboratory Grown Diamond was created by Chemical Vapor Deposition (CVD) growth process. Type IIa