



**ELECTRONIC COPY**

LG750570016  
Report verification at igi.org



December 8, 2025  
IGI Report Number **LG750570016**  
Description **LABORATORY GROWN DIAMOND**  
Shape and Cutting Style **ROUND BRILLIANT**  
Measurements **9.45 - 9.48 X 5.50 MM**  
**GRADING RESULTS**  
Carat Weight **3.02 CARATS**  
Color Grade **F**  
Clarity Grade **VS 1**  
Cut Grade **EXCELLENT**

December 8, 2025  
IGI Report Number **LG750570016**  
Description **LABORATORY GROWN DIAMOND**  
Shape and Cutting Style **ROUND BRILLIANT**  
Measurements **9.45 - 9.48 X 5.50 MM**

**GRADING RESULTS**

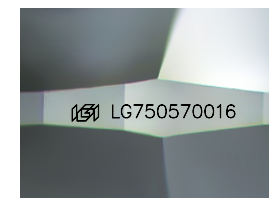
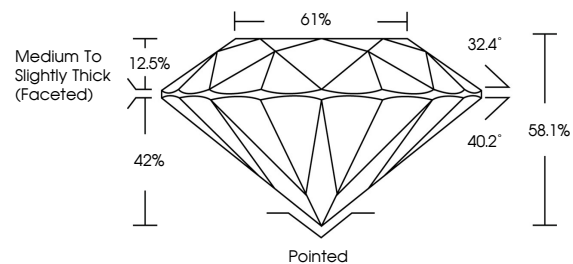
Carat Weight **3.02 CARATS**  
Color Grade **F**  
Clarity Grade **VS 1**  
Cut Grade **EXCELLENT**

**ADDITIONAL GRADING INFORMATION**

Polish **EXCELLENT**  
Symmetry **EXCELLENT**  
Fluorescence **NONE**  
Inscription(s) **IGI LG750570016**

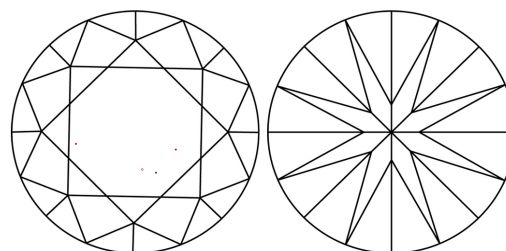
Comments: This Laboratory Grown Diamond was created by Chemical Vapor Deposition (CVD) growth process.  
Type IIa

**PROPORTIONS**



Sample Image Used

**CLARITY CHARACTERISTICS**



**KEY TO SYMBOLS**

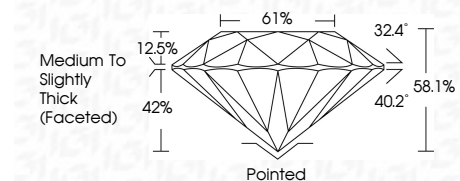
Red symbols indicate internal characteristics.  
Green symbols indicate external characteristics.

**COLOR**

D E F G H I J Faint Very Light Light

**CLARITY**

FL	IF	VS <sup>1-2</sup>	VS <sup>1-2</sup>	SI <sup>1-2</sup>	I <sup>1-3</sup>
Flawless	Internally Flawless	Very Very Slightly Included	Very Slightly Included	Slightly Included	Included



**ADDITIONAL GRADING INFORMATION**

Polish **EXCELLENT**  
Symmetry **EXCELLENT**  
Fluorescence **NONE**  
Inscription(s) **IGI LG750570016**  
Comments: This Laboratory Grown Diamond was created by Chemical Vapor Deposition (CVD) growth process.  
Type IIa



December 8, 2025  
IGI Report No LG750570016  
**ROUND BRILLIANT**  
9.45 - 9.48 X 5.50 MM  
3.02 CARATS  
F  
Color Grade  
VS 1  
Clarity Grade  
EXCELLENT  
Depth  
58.1%  
Table  
61%  
Girdle  
Medium To Slightly Thick (Faceted)  
Culet  
Pointed  
Polish  
EXCELLENT  
Symmetry  
EXCELLENT  
Fluorescence  
NONE  
Inscriptions(s)  
IGI LG750570016  
Comments: This Laboratory Grown Diamond was created by Chemical Vapor Deposition (CVD) growth process.  
Type IIa