



**ELECTRONIC COPY**

## LABORATORY GROWN DIAMOND REPORT

December 2, 2025	
IGI Report Number	LG752567241
Description	LABORATORY GROWN DIAMOND
Shape and Cutting Style	ROUND BRILLIANT
Measurements	8.08 - 8.10 X 4.96 MM

## GRADING RESULTS

Carat Weight	2.02 CARATS
Color Grade	F
Clarity Grade	VS 2
Cut Grade	IDEAL

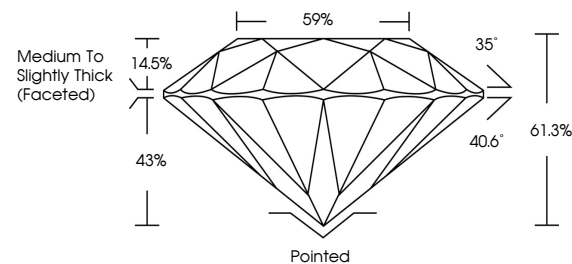
### ADDITIONAL GRADING INFORMATION

Polish	EXCELLENT
Symmetry	EXCELLENT
Fluorescence	NONE
Inscription(s)	 LG752567241

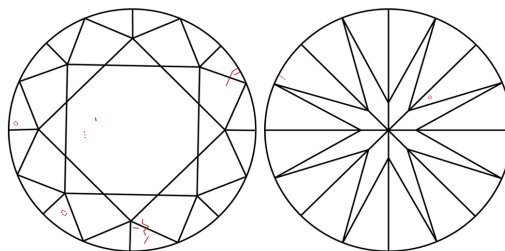
Comments: This Laboratory Grown Diamond was created by Chemical Vapor Deposition (CVD) growth process.  
Type IIa

LG752567241  
Report verification at [igi.org](https://igi.org)

## PROPORTIONS

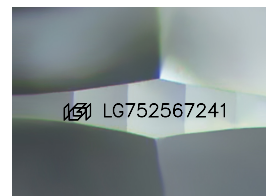


## CLARITY CHARACTERISTICS



## KEY TO SYMBOLS

Red symbols indicate internal characteristics.  
Green symbols indicate external characteristics.



Sample Image Used

**COLOR**

D E F G H I J Faint Very Light Light

## CLARITY

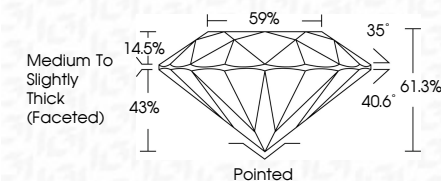
FL	IF	VVS <sup>1-2</sup>	VS <sup>1-2</sup>	SI <sup>1-2</sup>	I <sup>1-3</sup>
Flawless	Internally Flawless	Very Very Slightly Included	Very Slightly Included	Slightly Included	Included



December 2, 2025	
IGI Report Number	LG752567241
Description	LABORATORY GROWN DIAMOND
Shape and Cutting Style	ROUND BRILLIANT
Measurements	8.08 - 8.10 X 4.96 MM

## GRADING RESULTS

Carat Weight	2.02 CARATS
Color Grade	F
Clarity Grade	VS 2
Cut Grade	IDEAL



### ADDITIONAL GRADING INFORMATION

Polish	EXCELLENT
Symmetry	EXCELLENT
Fluorescence	NONE
Inscription(s)	 LG752567241
<p>Comments: This Laboratory Grown Diamond was created by Chemical Vapor Deposition (CVD) growth process.</p> <p>Type IIa</p>	



© IGI 2020, International Gemological Institute

FD - 10 20



THIS DOCUMENT WAS PRODUCED WITH THE FOLLOWING SECURITY MEASURES: SPECIAL DOCUMENT PAPER, INK SCREENS, WATERMARK, BACKGROUND DESIGNS, HOLOGRAM AND OTHER SECURITY FEATURES NOT LISTED AND DO EXCEED DOCUMENT SECURITY INDUSTRY GUIDELINES

**www.igi.org**



Report No. LG79567241	2.02 CARATS	VS 2	Printed
ROUND BRILLIANT	Color Grade	IDEAL	EXCELLENT
8.08 - 8.10 X 4.96 MM	Carat Weight	61.3%	EXCELLENT
	Clarity Grade	59%	NONE
	Depth	Medium to slightly Thick (Faceted)	ser LG79567241
	Table		
	Girdle		
	Culet		
	Polish		
	Symmetry		
	Fluorescence		
	Annotations(s)		

**Comments:**  
This Laboratory Grown Diamond was created by Chemical Vapor Deposition (CVD) growth process.