



ELECTRONIC COPY

LG752569333
Report verification at igi.org



November 29, 2025

IGI Report Number **LG752569333**

Description **LABORATORY GROWN DIAMOND**

Shape and Cutting Style **ROUND BRILLIANT**

Measurements **9.01 - 9.09 X 5.38 MM**

GRADING RESULTS

Carat Weight **2.69 CARATS**

Color Grade **F**

Clarity Grade **VS 1**

Cut Grade **IDEAL**

November 29, 2025
IGI Report Number **LG752569333**
Description **LABORATORY GROWN DIAMOND**
Shape and Cutting Style **ROUND BRILLIANT**
Measurements **9.01 - 9.09 X 5.38 MM**

GRADING RESULTS

Carat Weight **2.69 CARATS**

Color Grade **F**

Clarity Grade **VS 1**

Cut Grade **IDEAL**

ADDITIONAL GRADING INFORMATION

Polish **EXCELLENT**

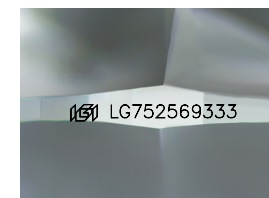
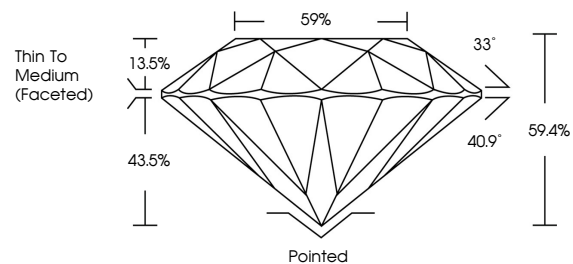
Symmetry **EXCELLENT**

Fluorescence **NONE**

Inscription(s) **IGI LG752569333**

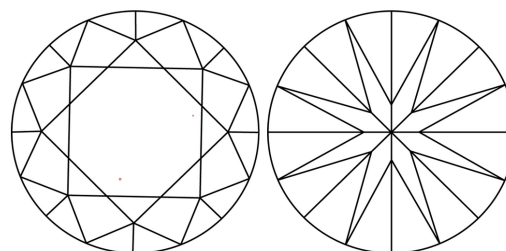
Comments: This Laboratory Grown Diamond was created by Chemical Vapor Deposition (CVD) growth process.
Type IIa

PROPORTIONS



Sample Image Used

CLARITY CHARACTERISTICS



KEY TO SYMBOLS

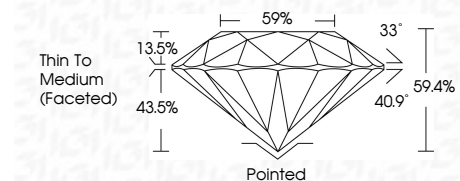
Red symbols indicate internal characteristics.
Green symbols indicate external characteristics.

COLOR

D E F G H I J Faint Very Light Light

CLARITY

| FL | IF | VS ¹⁻² | VS ¹⁻² | SI ¹⁻² | I ¹⁻³ |
|----------|---------------------|-----------------------------|------------------------|-------------------|------------------|
| Flawless | Internally Flawless | Very Very Slightly Included | Very Slightly Included | Slightly Included | Included |



ADDITIONAL GRADING INFORMATION

Polish **EXCELLENT**

Symmetry **EXCELLENT**

Fluorescence **NONE**

Inscription(s) **IGI LG752569333**

Comments: This Laboratory Grown Diamond was created by Chemical Vapor Deposition (CVD) growth process.
Type IIa



IGI



| | | | | | | | | | | | | |
|---------------------------|-----------------------|-------------|---------------|-----------|-------|-------|--------------------------|---------|-----------|-----------|--------------|-----------------|
| November 29, 2025 | 2.69 CARATS | F | VS 1 | IDEAL | 59.4% | 59% | Thin To Medium (Faceted) | Pointed | EXCELLENT | EXCELLENT | NONE | IGI LG752569333 |
| IGI Report No LG752569333 | Carat Weight | Color Grade | Clarity Grade | Cut Grade | Depth | Table | Girdle | Culet | Polish | Symmetry | Fluorescence | Inscription(s) |
| ROUND BRILLIANT | 9.01 - 9.09 X 5.38 MM | F | VS 1 | IDEAL | 59.4% | 59% | Thin To Medium (Faceted) | Pointed | EXCELLENT | EXCELLENT | NONE | IGI LG752569333 |

Comments: This Laboratory Grown Diamond was created by Chemical Vapor Deposition (CVD) growth process.
Type IIa