



**ELECTRONIC COPY**

LG752597819  
Report verification at igi.org



December 1, 2025

IGI Report Number **LG752597819**

Description **LABORATORY GROWN DIAMOND**

Shape and Cutting Style **PRINCESS CUT**

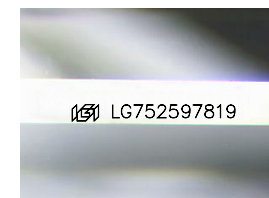
Measurements **8.83 X 8.63 X 5.94 MM**

**GRADING RESULTS**

Carat Weight **3.95 CARATS**

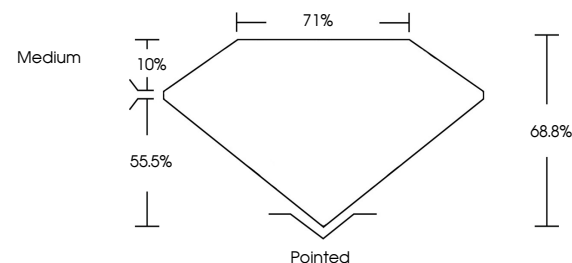
Color Grade **F**

Clarity Grade **VVS 2**

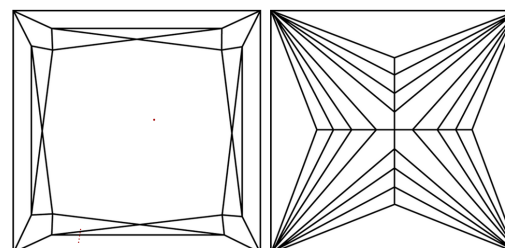


Sample Image Used

**PROPORTIONS**



**CLARITY CHARACTERISTICS**



**KEY TO SYMBOLS**

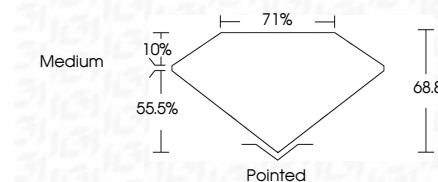
Red symbols indicate internal characteristics.  
Green symbols indicate external characteristics.

**COLOR**

D E F G H I J Faint Very Light Light

**CLARITY**

FL	IF	VVS <sup>1-2</sup>	VS <sup>1-2</sup>	SI <sup>1-2</sup>	I <sup>1-3</sup>
Flawless	Internally Flawless	Very Very Slightly Included	Very Slightly Included	Slightly Included	Included



**ADDITIONAL GRADING INFORMATION**

Polish **EXCELLENT**

Symmetry **EXCELLENT**

Fluorescence **NONE**

Inscription(s) **IGI LG752597819**

Comments: This Laboratory Grown Diamond was created by Chemical Vapor Deposition (CVD) growth process. Type IIa



**IGI**



December 1, 2025  
IGI Report No LG752597819  
**PRINCESS CUT**

**3.95 CARATS**  
F

**8.83 X 8.63 X 5.94 MM**  
VVS 2  
68.8%  
71%  
Medium

**Pointed**  
EXCELLENT  
EXCELLENT  
NONE  
IGI LG752597819

Comments: This Laboratory Grown Diamond was created by Chemical Vapor Deposition (CVD) growth process. Type IIa