



## LABORATORY GROWN DIAMOND REPORT

GRADING RESULTS	
Carat Weight	2.15 CARATS
Color Grade	E
Clarity Grade	VS 2
Cut Grade	IDEAL

Polish	EXCELLENT
Symmetry	EXCELLENT
Fluorescence	NONE
Inscription(s)	 LG754502905

Comments: This Laboratory Grown Diamond was created by Chemical Vapor Deposition (CVD) growth process.  
Type IIa

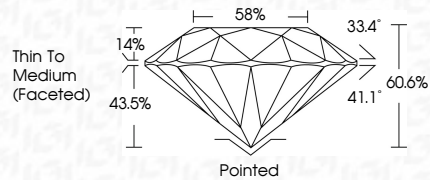
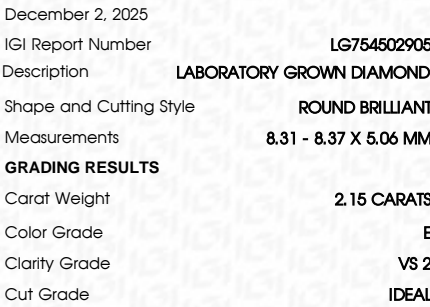
LG754502905  
Report verification at [igi.org](https://igi.org)

Red symbols indicate internal characteristics.  
Green symbols indicate external characteristics.



D	E	F	G	H	I	J	Faint	Very Light	Light
---	---	---	---	---	---	---	-------	------------	-------

FL	IF	VVS <sup>1-2</sup>	VS <sup>1-2</sup>	SI <sup>1-2</sup>	I <sup>1-3</sup>
Flawless	Internally Flawless	Very Very Slightly Included	Very Slightly Included	Slightly Included	Included



Polish	EXCELLENT
Symmetry	EXCELLENT
Fluorescence	NONE
Inscription(s)	<del>LG</del> LG754502908
<p>Comments: This Laboratory Grown Diamond was created by Chemical Vapor Deposition (CVD) growth process.</p> <p>Type IIa</p>	



FD - 10 20

**www.igi.org**



GIA Report No. U75682905		ROUND BRILLIANT		4.31 - 4.37 X 5.05 MM		2.15 CARATS		E		VS 2		IDEAL		60.0%		56%		Thin To Medium (graded)		Polished		EXCELLENT		EXCELLENT		NONE		(g) U75682905		Comments:		The Laboratory Grown Diamond was created by Chemical Vapor Deposition (CVD) growth process.		Type IIa	
December 2025						Color Grade		Carat Weight		Clarity Grade		Cut Grade		Depth		Table		Girdle		Culet		Polish		Symmetry		Fluorescence		Inscription(s)							