



ELECTRONIC COPY

LG755528205
Report verification at igi.org



December 10, 2025
IGI Report Number **LG755528205**
Description **LABORATORY GROWN DIAMOND**
Shape and Cutting Style **SQUARE CUSHION MODIFIED BRILLIANT**

Measurements **5.84 X 5.79 X 3.94 MM**

GRADING RESULTS

Carat Weight **1.01 CARAT**
Color Grade **F**
Clarity Grade **VVS 1**

December 10, 2025
IGI Report Number **LG755528205**
Description **LABORATORY GROWN DIAMOND**
Shape and Cutting Style **SQUARE CUSHION MODIFIED BRILLIANT**
Measurements **5.84 X 5.79 X 3.94 MM**

GRADING RESULTS

Carat Weight **1.01 CARAT**
Color Grade **F**
Clarity Grade **VVS 1**

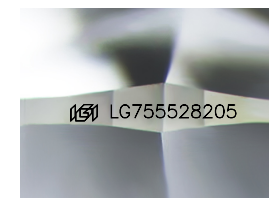
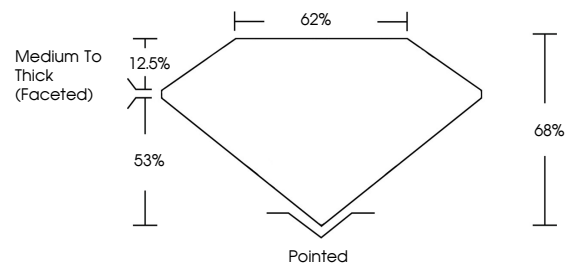
ADDITIONAL GRADING INFORMATION

Polish **EXCELLENT**
Symmetry **EXCELLENT**
Fluorescence **NONE**

Inscription(s) **IGI LG755528205**

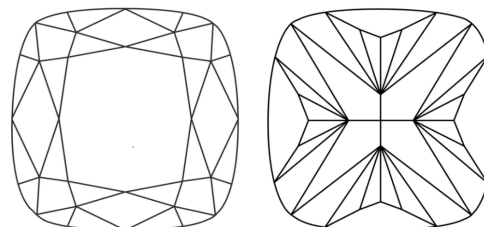
Comments: This Laboratory Grown Diamond was created by Chemical Vapor Deposition (CVD) growth process. Type IIa

PROPORTIONS



Sample Image Used

CLARITY CHARACTERISTICS



KEY TO SYMBOLS

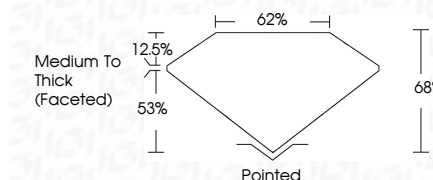
Red symbols indicate internal characteristics.
Green symbols indicate external characteristics.

COLOR

D E F G H I J Faint Very Light Light

CLARITY

| FL | IF | VVS ¹⁻² | VS ¹⁻² | SI ¹⁻² | I ¹⁻³ |
|----------|---------------------|-----------------------------|------------------------|-------------------|------------------|
| Flawless | Internally Flawless | Very Very Slightly Included | Very Slightly Included | Slightly Included | Included |



ADDITIONAL GRADING INFORMATION

Polish **EXCELLENT**
Symmetry **EXCELLENT**
Fluorescence **NONE**

Inscription(s) **IGI LG755528205**

Comments: This Laboratory Grown Diamond was created by Chemical Vapor Deposition (CVD) growth process. Type IIa



December 10, 2025
IGI Report No LG755528205
SQUARE CUSHION MODIFIED BRILLIANT
5.84 X 5.79 X 3.94 MM
1.01 CARAT
F
VVS 1
68%
62%
Medium To Thick (Faceted)
Pointed
EXCELLENT
EXCELLENT
NONE
IGI LG755528205
Comments: This Laboratory Grown Diamond was created by Chemical Vapor Deposition (CVD) growth process. Type IIa