



**INTERNATIONAL  
GEMOLOGICAL  
INSTITUTE**

**ELECTRONIC COPY**

LG757525348  
Report verification at [igi.org](https://igi.org)

LABORATORY GROWN DIAMOND REPORT



December 17, 2025

IGI Report Number **LG757525348**

Description	LABORATORY GROWN DIAMOND
-------------	--------------------------

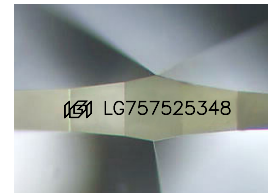
Shape and Cutting Style **PEAR BRILLIANT**

Measurements	9.00 X 5.69 X 3.55 MM
--------------	-----------------------

## GRADING RESULTS

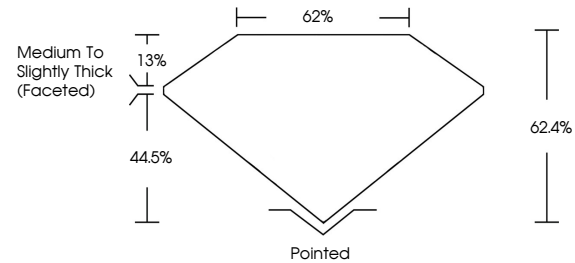
Carat Weight **1.07 CARAT**

Color Grade **E**

Clarity Grade **VVS 2**

Sample Image Used

## PROPORTIONS



## COLOR

D E F G H I J Faint Very Light Light

## CLARITY

FL IF WVS<sup>1-2</sup> VS<sup>1-2</sup> S<sup>1-2</sup> |<sup>1-3</sup>

Flawless	Internally Flawless	Very Very Slightly Included	Very Slightly Included	Slightly Included	Included
----------	------------------------	--------------------------------	---------------------------	----------------------	----------

### ADDITIONAL GRADING INFORMATION

Polish **EXCELLENT**Symmetry **EXCELLENT**Fluorescence **NONE**Inscription(s)  LG757525348

Comments: This Laboratory Grown Diamond was created by Chemical Vapor Deposition (CVD) growth process.  
Type IIa



IGI



© IGI 2020, International Gemological Institute

FD - 10 20

**www.igi.org**



THIS DOCUMENT WAS PRODUCED WITH THE FOLLOWING SECURITY MEASURES: SPECIAL DOCUMENT PAPER, INK SCREENS, WATERMARK BACKGROUND DESIGNS, HOLOGRAM AND OTHER SECURITY FEATURES NOT LISTED AND DO EXCEED DOCUMENT SECURITY INDUSTRY GUIDELINES

December 17, 2025  
IGI Report No LG757525348  
PEAR BRILLIANT

90.0 X 5.69 X 3.55 MM	Carat Weight	1.07 CARAT
	Color Grade	E
	Clarity Grade	VS 2
	Depth	62.4%
	Table	62%
	Grade	Medium To Slightly Thick (Faceted)
	Culet	Pointed
	Polish	EXCELLENT
	Symmetry	EXCELLENT
	Fluorescence	NONE
	Inscriptions(s)	1691 LG757523348

**Comments:**  
This Laboratory Grown Diamond was created by Chemical Vapor Deposition (CVD) growth process.  
Type IIa