



ELECTRONIC COPY

LABORATORY GROWN DIAMOND REPORT

LG759530030
Report verification at lgi.org

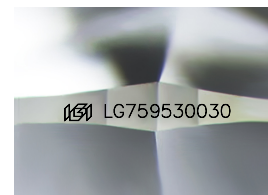
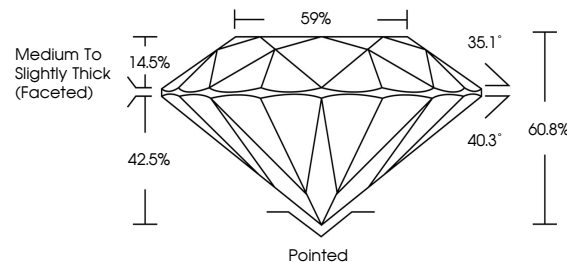
December 26, 2025	
IGI Report Number	LG759530030
Description	LABORATORY GROWN DIAMOND
Shape and Cutting Style	ROUND BRILLIANT
Measurements	6.39 - 6.43 X 3.90 MM
GRADING RESULTS	
Carat Weight	1.00 CARAT
Color Grade	D
Clarity Grade	VS 2
Cut Grade	IDEAL

ADDITIONAL GRADING INFORMATION

Polish	EXCELLENT
Symmetry	EXCELLENT
Fluorescence	NONE
Inscription(s)	15 LG759530030

Comments: As Grown - No indication of post-growth treatment.
This Laboratory Grown Diamond was created by High Pressure High Temperature (HPHT) growth process.
Type II

PROPORTIONS



Sample Image Used

COLOR

D E F G H I J Faint Very Light Light

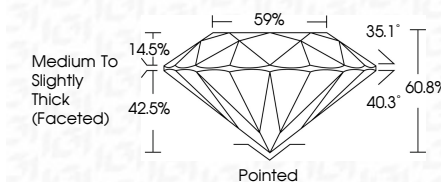
CLARITY

FL	IF	VVS ¹⁻²	VS ¹⁻²	SI ¹⁻²	I ¹⁻³
Flawless	Internally Flawless	Very Very Slightly Included	Very Slightly Included	Slightly Included	Included

LABORATORY GROWN DIAMOND REPORT



December 26, 2025	
IGI Report Number	LG759530030
Description	LABORATORY GROWN DIAMOND
Shape and Cutting Style	ROUND BRILLIANT
Measurements	6.39 - 6.43 X 3.90 MM
GRADING RESULTS	
Carat Weight	1.00 CARAT
Color Grade	D
Clarity Grade	VS 2
Cut Grade	IDEAL



ADDITIONAL GRADING INFORMATION

Polish	EXCELLENT
Symmetry	EXCELLENT
Fluorescence	NONE
Inscription(s)	 LG759530030
Comments: As Grown - No indication of post-growth treatment.	
This Laboratory Grown Diamond was created by High Pressure High Temperature (HPHT) growth process.	
Type II	



© IGI 2020, International Gemological Institute

FD - 10 20



THIS DOCUMENT WAS PRODUCED WITH THE FOLLOWING SECURITY MEASURES: SPECIAL DOCUMENT PAPER, INK SCREENS, WATERMARK, BACKGROUND DESIGNS, HOLOGRAM AND OTHER SECURITY FEATURES NOT LISTED AND DO EXCEED DOCUMENT SECURITY INDUSTRY GUIDELINE

www.igi.org

December 26, 2025
LGI Report No LG759530030
ROUND BRILLIANT

5.39 - 6.43 X 3.90 MM

5.39 - 6.43 X 3.90 MM
Carat Weight
1.00 CARAT

Catal Weight %	D
Color Grade	

Clarity Grade	VS 2
VS 2	

	VS 2	IDEAL
Clarity Grade		
Cut Grade		

Depth	60.8%
100	60.8%
200	60.8%
300	60.8%
400	60.8%
500	60.8%
600	60.8%
700	60.8%
800	60.8%
900	60.8%
1000	60.8%
1100	60.8%
1200	60.8%
1300	60.8%
1400	60.8%
1500	60.8%
1600	60.8%
1700	60.8%
1800	60.8%
1900	60.8%
2000	60.8%
2100	60.8%
2200	60.8%
2300	60.8%
2400	60.8%
2500	60.8%
2600	60.8%
2700	60.8%
2800	60.8%
2900	60.8%
3000	60.8%
3100	60.8%
3200	60.8%
3300	60.8%
3400	60.8%
3500	60.8%
3600	60.8%
3700	60.8%
3800	60.8%
3900	60.8%
4000	60.8%
4100	60.8%
4200	60.8%
4300	60.8%
4400	60.8%
4500	60.8%
4600	60.8%
4700	60.8%
4800	60.8%
4900	60.8%
5000	60.8%
5100	60.8%
5200	60.8%
5300	60.8%
5400	60.8%
5500	60.8%
5600	60.8%
5700	60.8%
5800	60.8%
5900	60.8%
6000	60.8%
6100	60.8%
6200	60.8%
6300	60.8%
6400	60.8%
6500	60.8%
6600	60.8%
6700	60.8%
6800	60.8%
6900	60.8%
7000	60.8%
7100	60.8%
7200	60.8%
7300	60.8%
7400	60.8%
7500	60.8%
7600	60.8%
7700	60.8%
7800	60.8%
7900	60.8%
8000	60.8%
8100	60.8%
8200	60.8%
8300	60.8%
8400	60.8%
8500	60.8%
8600	60.8%
8700	60.8%
8800	60.8%
8900	60.8%
9000	60.8%
9100	60.8%
9200	60.8%
9300	60.8%
9400	60.8%
9500	60.8%
9600	60.8%
9700	60.8%
9800	60.8%
9900	60.8%
10000	60.8%

Table	59%
Girdle	Modelling Technology

Girdle

	Culet	Pointed
1		
2		
3		
4		
5		
6		
7		
8		
9		
10		
11		
12		
13		
14		
15		
16		
17		
18		
19		
20		
21		
22		
23		
24		
25		
26		
27		
28		
29		
30		
31		
32		
33		
34		
35		
36		
37		
38		
39		
40		
41		
42		
43		
44		
45		
46		
47		
48		
49		
50		
51		
52		
53		
54		
55		
56		
57		
58		
59		
60		
61		
62		
63		
64		
65		
66		
67		
68		
69		
70		
71		
72		
73		
74		
75		
76		
77		
78		
79		
80		
81		
82		
83		
84		
85		
86		
87		
88		
89		
90		
91		
92		
93		
94		
95		
96		
97		
98		
99		
100		

Polish	EXCELLENT
Czech	POOR

Symmetry

Fluorescence	NONE
Subscription(s)	1681 G759530030

Registration (\$) 150 LG/5963030

Comments:
As Grown - No Indication of post-growth

As Grown - No indication of post-growth treatment.

**This Laboratory Grown Diamond was
Created by High Pressure High**

Temperature (HPHT) growth process.
Type II