



ELECTRONIC COPY

LABORATORY GROWN DIAMOND REPORT

January 17, 2026
IGI Report Number **LG764671149**

Description **LABORATORY GROWN DIAMOND**

Shape and Cutting Style **HEPTAGONAL MODIFIED STEP CUT**

Measurements **8.65 X 5.50 X 3.11 MM**

GRADING RESULTS

Carat Weight **1.05 CARAT**

Color Grade **E**

Clarity Grade **VS 1**

ADDITIONAL GRADING INFORMATION

Polish **EXCELLENT**

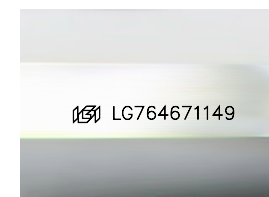
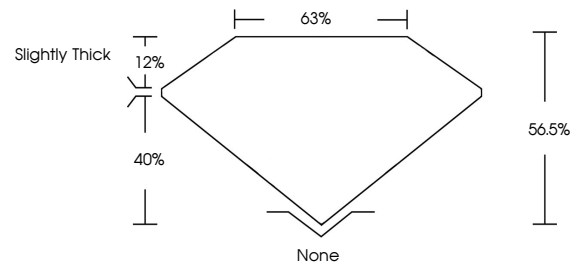
Symmetry **EXCELLENT**

Fluorescence **NONE**

Inscription(s) **IGI LG764671149**

Comments: This Laboratory Grown Diamond was created by Chemical Vapor Deposition (CVD) growth process.
Type IIa

PROPORTIONS



Sample Image Used

COLOR

D E F G H I J Faint Very Light Light

CLARITY

FL	IF	VS ¹⁻²	VS ¹⁻²	SI ¹⁻²	I ¹⁻³
Flawless	Internally Flawless	Very Very Slightly Included	Very Slightly Included	Slightly Included	Included



January 17, 2026

IGI Report Number **LG764671149**

Description **LABORATORY GROWN DIAMOND**

Shape and Cutting Style **HEPTAGONAL MODIFIED STEP CUT**

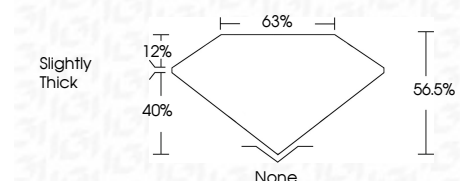
Measurements **8.65 X 5.50 X 3.11 MM**

GRADING RESULTS

Carat Weight **1.05 CARAT**

Color Grade **E**

Clarity Grade **VS 1**



ADDITIONAL GRADING INFORMATION

Polish **EXCELLENT**

Symmetry **EXCELLENT**

Fluorescence **NONE**

Inscription(s) **IGI LG764671149**

Comments: This Laboratory Grown Diamond was created by Chemical Vapor Deposition (CVD) growth process.
Type IIa



IGI



January 17, 2026
IGI Report No LG764671149
HEPTAGONAL MODIFIED STEP CUT

8.65 X 5.50 X 3.11 MM
1.05 CARAT
E
VS 1
56.5%
63%
Slightly Thick
None
EXCELLENT
EXCELLENT
NONE
IGI LG764671149

Comments: This Laboratory Grown Diamond was created by Chemical Vapor Deposition (CVD) growth process.
Type IIa