

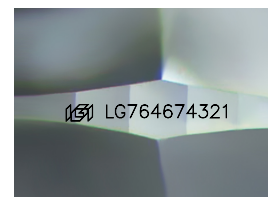
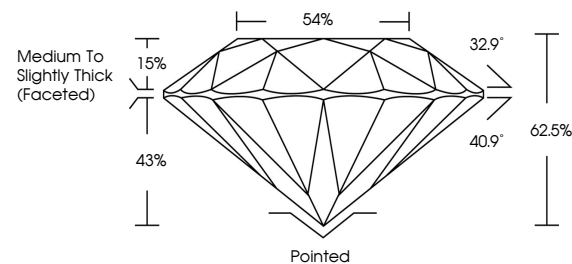


ELECTRONIC COPY

LABORATORY GROWN DIAMOND REPORT

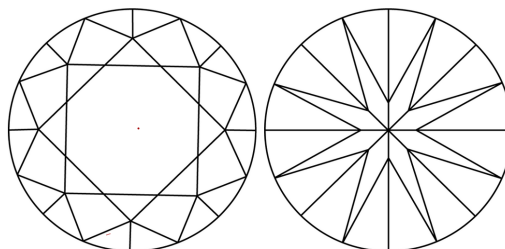
LG764674321
Report verification at igi.org

PROPORTIONS



Sample Image Used

CLARITY CHARACTERISTICS



KEY TO SYMBOLS

Red symbols indicate internal characteristics.
Green symbols indicate external characteristics.

COLOR

D E F G H I J Faint Very Light Light

CLARITY

FL	IF	VVS ¹⁻²	VS ¹⁻²	SI ¹⁻²	I ¹⁻³
Flawless	Internally Flawless	Very Very Slightly Included	Very Slightly Included	Slightly Included	Included



January 12, 2026

IGI Report Number **LG764674321**Description **LABORATORY GROWN DIAMOND**Shape and Cutting Style **ROUND BRILLIANT**

Measurements 6.33 - 6.41 X 3.99 MM

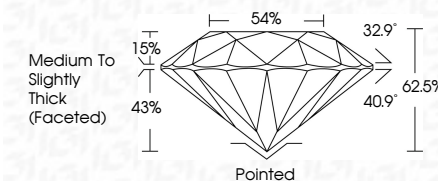
GRADING RESULTS

Carat Weight 1.00 CARAT

Color Grade D

Clarity Grade WS 2

Cut Grade **EXCELLENT**



ADDITIONAL GRADING INFORMATION

Polish **EXCELLENT**Symmetry **EXCELLENT**Fluorescence NONEInscription(s) LG764674321

Comments: This Laboratory Grown Diamond was created by Chemical Vapor Deposition (CVD) growth process.
Type IIa



© IGI 2020, International Gemological Institute

FD - 10 20



THIS DOCUMENT WAS PRODUCED WITH THE FOLLOWING SECURITY MEASURES: SPECIAL DOCUMENT PAPER, INK SCREENS, WATERMARK, BACKGROUND DESIGNS, HOLOGRAM, AND OTHER SECURITY FEATURES NOT LISTED AND DO EXCEED DOCUMENT SECURITY INDUSTRY GUIDELINES.

www.igi.org

January 12, 2026
GI Report No LG764674321
ROUND BRILLIANT

Color	Color Grade	VVS 2	1.00 CARAT D
Clarity	Clarity Grade	EXCELLENT	
Cut	Cut Grade	62.0%	
Depth	Table	54%	
Girdle	Girdle	Medium To Slightly Thick (Faceted)	
Culet	Culet	Poined	
Polish	Polish	EXCELLENT	
Symmetry	Symmetry	EXCELLENT	
Fluorescence	Fluorescence	NONE	
Comments	Comments	gem #C746467893	

Comments:
This Laboratory Grown Diamond was
created by Chemical Vapor Deposition
(CVD) growth process.