



ELECTRONIC COPY

LG765635940
Report verification at igi.org

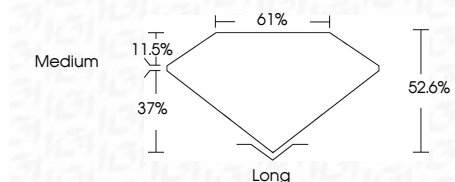


January 20, 2026
IGI Report Number **LG765635940**
Description **LABORATORY GROWN DIAMOND**
Shape and Cutting Style **HEPTAGONAL MODIFIED STEP CUT**

Measurements **9.86 X 6.39 X 3.36 MM**

GRADING RESULTS

Carat Weight **1.57 CARAT**
Color Grade **E**
Clarity Grade **VS 2**



ADDITIONAL GRADING INFORMATION

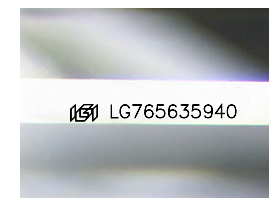
Polish **EXCELLENT**
Symmetry **EXCELLENT**
Fluorescence **NONE**
Inscription(s) **IGI LG765635940**
Comments: This Laboratory Grown Diamond was created by Chemical Vapor Deposition (CVD) growth process. Type IIa



IGI

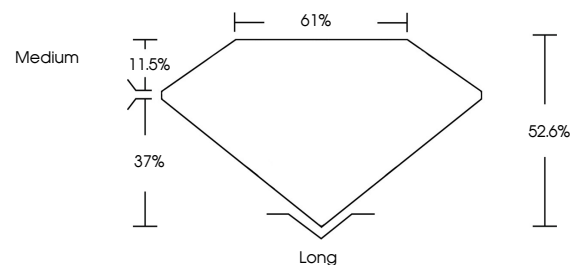
January 20, 2026
IGI Report No LG765635940
HEPTAGONAL MODIFIED STEP CUT
9.86 X 6.39 X 3.36 MM
1.57 CARAT
E
VS 2
E
61%
11.5%
37%
52.6%
Medium
Long
EXCELLENT
EXCELLENT
NONE
IGI LG765635940

Comments: This Laboratory Grown Diamond was created by Chemical Vapor Deposition (CVD) growth process. Type IIa

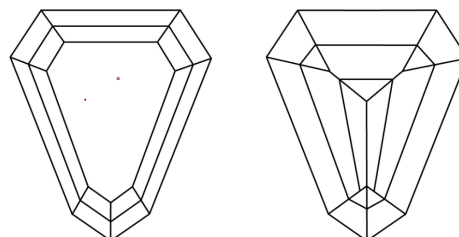


Sample Image Used

PROPORTIONS



CLARITY CHARACTERISTICS



KEY TO SYMBOLS

Red symbols indicate internal characteristics.
Green symbols indicate external characteristics.

COLOR

D E F G H I J Faint Very Light Light

CLARITY

FL	IF	VS ¹⁻²	VS ¹⁻²	SI ¹⁻²	I ¹⁻³
Flawless	Internally Flawless	Very Very Slightly Included	Very Slightly Included	Slightly Included	Included

