



**ELECTRONIC COPY**

LG766626943  
Report verification at igi.org



January 22, 2026  
IGI Report Number **LG766626943**  
Description **LABORATORY GROWN DIAMOND**  
Shape and Cutting Style **HEPTAGONAL MODIFIED STEP CUT**  
Measurements **10.49 X 6.72 X 3.99 MM**  
**GRADING RESULTS**  
Carat Weight **2.03 CARATS**  
Color Grade **F**  
Clarity Grade **VVS 2**

**LABORATORY GROWN DIAMOND REPORT**

January 22, 2026  
IGI Report Number **LG766626943**  
Description **LABORATORY GROWN DIAMOND**  
Shape and Cutting Style **HEPTAGONAL MODIFIED STEP CUT**  
Measurements **10.49 X 6.72 X 3.99 MM**

**GRADING RESULTS**

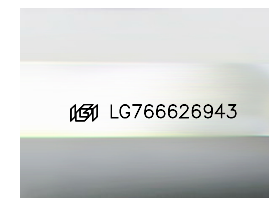
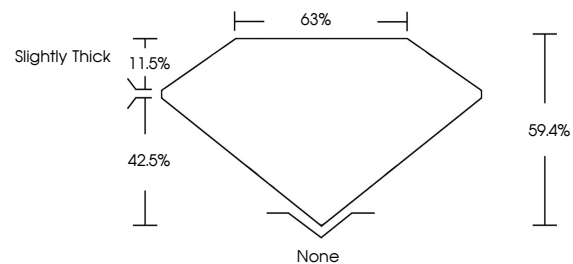
Carat Weight **2.03 CARATS**  
Color Grade **F**  
Clarity Grade **VVS 2**

**ADDITIONAL GRADING INFORMATION**

Polish **EXCELLENT**  
Symmetry **EXCELLENT**  
Fluorescence **NONE**  
Inscription(s) **IGI LG766626943**

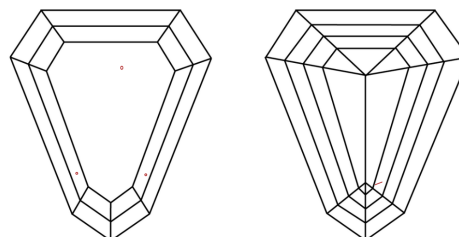
Comments: This Laboratory Grown Diamond was created by Chemical Vapor Deposition (CVD) growth process.  
Type IIa

**PROPORTIONS**



Sample Image Used

**CLARITY CHARACTERISTICS**



**KEY TO SYMBOLS**

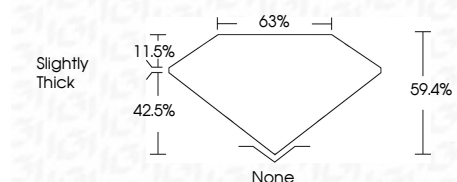
Red symbols indicate internal characteristics.  
Green symbols indicate external characteristics.

**COLOR**

D E F G H I J Faint Very Light Light

**CLARITY**

FL	IF	VVS <sup>1-2</sup>	VS <sup>1-2</sup>	SI <sup>1-2</sup>	I <sup>1-3</sup>
Flawless	Internally Flawless	Very Very Slightly Included	Very Slightly Included	Slightly Included	Included



**ADDITIONAL GRADING INFORMATION**

Polish **EXCELLENT**  
Symmetry **EXCELLENT**  
Fluorescence **NONE**  
Inscription(s) **IGI LG766626943**  
Comments: This Laboratory Grown Diamond was created by Chemical Vapor Deposition (CVD) growth process.  
Type IIa



January 22, 2026  
IGI Report No LG766626943  
**HEPTAGONAL MODIFIED STEP CUT**  
2.03 CARATS  
F  
2.03 CARATS  
F  
VVS 2  
59.4%  
63%  
Slightly Thick  
None  
None  
EXCELLENT  
EXCELLENT  
NONE  
IGI LG766626943  
Comments: This Laboratory Grown Diamond was created by Chemical Vapor Deposition (CVD) growth process.  
Type IIa