



ELECTRONIC COPY

LABORATORY GROWN DIAMOND REPORT

January 22, 2026  
IGI Report Number LG76668515  
Description LABORATORY GROWN DIAMOND  
Shape and Cutting Style CUSHION BRILLIANT  
Measurements 15.09 X 9.28 X 5.96 MM

GRADING RESULTS

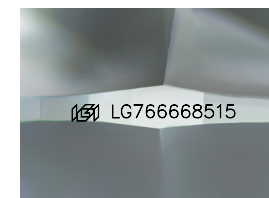
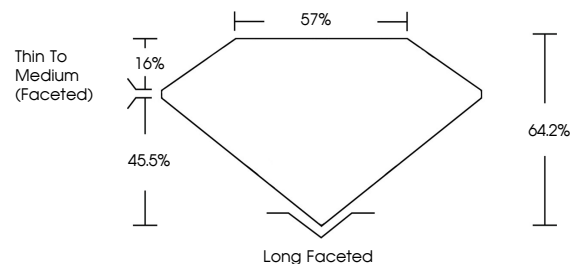
Carat Weight 6.50 CARATS  
Color Grade E  
Clarity Grade VVS 2

ADDITIONAL GRADING INFORMATION

Polish EXCELLENT  
Symmetry EXCELLENT  
Fluorescence NONE  
Inscription(s) (IGI) LG76668515

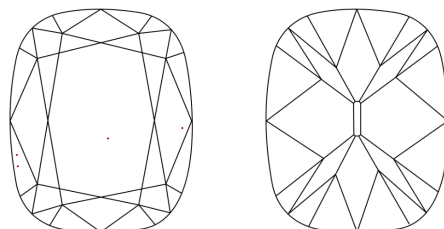
Comments: This Laboratory Grown Diamond was created by Chemical Vapor Deposition (CVD) growth process.  
Type IIa

PROPORTIONS



Sample Image Used

CLARITY CHARACTERISTICS



KEY TO SYMBOLS

Red symbols indicate internal characteristics.  
Green symbols indicate external characteristics.

COLOR

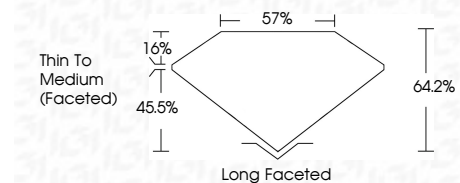
D E F G H I J Faint Very Light Light

CLARITY

FL IF VS 1-2 VS 1-2 SI 1-2 I 1-3  
Flawless Internally Flawless Very Very Slightly Included Very Slightly Included Slightly Included Included



January 22, 2026  
IGI Report Number LG76668515  
Description LABORATORY GROWN DIAMOND  
Shape and Cutting Style CUSHION BRILLIANT  
Measurements 15.09 X 9.28 X 5.96 MM  
GRADING RESULTS  
Carat Weight 6.50 CARATS  
Color Grade E  
Clarity Grade VVS 2



ADDITIONAL GRADING INFORMATION

Polish EXCELLENT  
Symmetry EXCELLENT  
Fluorescence NONE  
Inscription(s) (IGI) LG76668515  
Comments: This Laboratory Grown Diamond was created by Chemical Vapor Deposition (CVD) growth process.  
Type IIa



January 22, 2026  
IGI Report No LG76668515  
CUSHION BRILLIANT  
15.09 X 9.28 X 5.96 MM  
6.50 CARATS  
E  
VS 2  
64.2%  
57%  
Thin To Medium (Faceted)  
Long Faceted  
EXCELLENT  
EXCELLENT  
NONE  
(IGI) LG76668515  
Comments: This Laboratory Grown Diamond was created by Chemical Vapor Deposition (CVD) growth process.  
Type IIa