



ELECTRONIC COPY

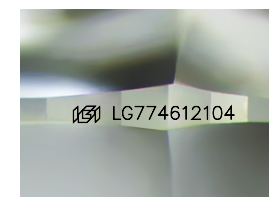
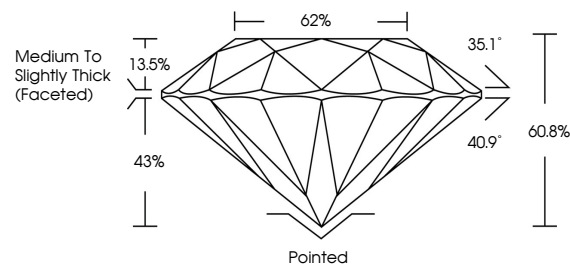
LG774612104 Report verification at igi.org



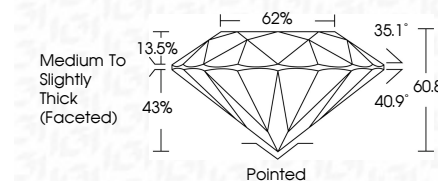
February 17, 2026 IGI Report Number LG774612104 Description LABORATORY GROWN DIAMOND Shape and Cutting Style ROUND BRILLIANT Measurements 7.38 - 7.44 X 4.51 MM GRADING RESULTS Carat Weight 1.54 CARAT Color Grade D Clarity Grade VVS 2 Cut Grade EXCELLENT

February 17, 2026 IGI Report Number LG774612104 Description LABORATORY GROWN DIAMOND Shape and Cutting Style ROUND BRILLIANT Measurements 7.38 - 7.44 X 4.51 MM GRADING RESULTS Carat Weight 1.54 CARAT Color Grade D Clarity Grade VVS 2 Cut Grade EXCELLENT

PROPORTIONS



Sample Image Used



ADDITIONAL GRADING INFORMATION

Polish EXCELLENT Symmetry EXCELLENT Fluorescence NONE Inscription(s) IGI LG774612104

ADDITIONAL GRADING INFORMATION

Polish EXCELLENT Symmetry EXCELLENT Fluorescence NONE Inscription(s) IGI LG774612104 Comments: This Laboratory Grown Diamond was created by Chemical Vapor Deposition (CVD) growth process. Type IIa

COLOR

D E F G H I J Faint Very Light Light

CLARITY

FL IF VVS 1-2 VS 1-2 SI 1-2 I 1-3 Flawless Internally Flawless Very Very Slightly Included Very Slightly Included Slightly Included Included



IGI



Certified SUSTAINABILITY RATED DIAMOND SCS GLOBAL SERVICES All certified diamonds come with an individual certificate, ONLY available at an accredited retailer. Includes QR code and 'FOR THE SUSTAINABILITY RATED CERTIFICATE, SCAN HERE' text.

February 17, 2026 IGI Report No LG774612104 ROUND BRILLIANT 7.38 - 7.44 X 4.51 MM 1.54 CARAT D VVS 2 EXCELLENT 60.8% 62% Medium To Slightly Thick (Faceted) Pointed EXCELLENT EXCELLENT NONE NONE IGI LG774612104 Comments: This Laboratory Grown Diamond was created by Chemical Vapor Deposition (CVD) growth process. Type IIa