



ELECTRONIC COPY

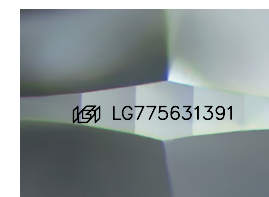
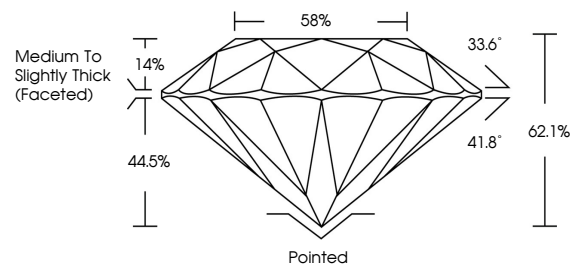
LG775631391
Report verification at igi.org



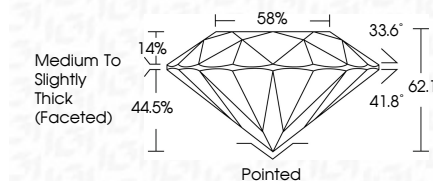
February 21, 2026
IGI Report Number LG775631391
Description LABORATORY GROWN DIAMOND
Shape and Cutting Style ROUND BRILLIANT
Measurements 7.48 - 7.54 X 4.66 MM
GRADING RESULTS
Carat Weight 1.59 CARAT
Color Grade D
Clarity Grade VVS 2
Cut Grade EXCELLENT

February 21, 2026
IGI Report Number LG775631391
Description LABORATORY GROWN DIAMOND
Shape and Cutting Style ROUND BRILLIANT
Measurements 7.48 - 7.54 X 4.66 MM
GRADING RESULTS
Carat Weight 1.59 CARAT
Color Grade D
Clarity Grade VVS 2
Cut Grade EXCELLENT

PROPORTIONS



Sample Image Used



ADDITIONAL GRADING INFORMATION

Polish EXCELLENT
Symmetry EXCELLENT
Fluorescence NONE
Inscription(s) IGI LG775631391

ADDITIONAL GRADING INFORMATION

Polish EXCELLENT
Symmetry EXCELLENT
Fluorescence NONE
Inscription(s) IGI LG775631391
Comments: This Laboratory Grown Diamond was created by Chemical Vapor Deposition (CVD) growth process. Type IIa

Comments: This Laboratory Grown Diamond was created by Chemical Vapor Deposition (CVD) growth process. Type IIa

COLOR

D E F G H I J Faint Very Light Light

CLARITY

FL IF VS 1-2 VS 1-2 SI 1-2 I 1-3
Flawless Internally Flawless Very Very Slightly Included Very Slightly Included Slightly Included Included



Certified SUSTAINABILITY RATED DIAMOND. All certified diamonds come with an individual certificate, ONLY available at an accredited retailer. SCS GLOBAL SERVICES. FOR THE SUSTAINABILITY RATED CERTIFICATE, SCAN HERE ->



February 21, 2026
IGI Report No LG775631391
ROUND BRILLIANT
7.48 - 7.54 X 4.66 MM
1.59 CARAT
Color Grade D
Clarity Grade VVS 2
Depth 62.1%
Table 88%
Medium To Slightly Thick (Faceted)
Cutler Pointed
Polish EXCELLENT
Symmetry EXCELLENT
Fluorescence NONE
Inscription(s) IGI LG775631391
Comments: This Laboratory Grown Diamond was created by Chemical Vapor Deposition (CVD) growth process. Type IIa