



**ELECTRONIC COPY**

LG776622273  
Report verification at igi.org



February 26, 2026

IGI Report Number **LG776622273**

Description **LABORATORY GROWN DIAMOND**

Shape and Cutting Style **PRINCESS CUT**

Measurements **7.46 X 7.32 X 5.24 MM**

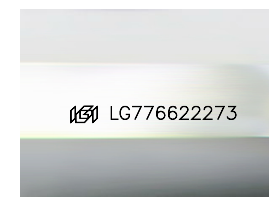
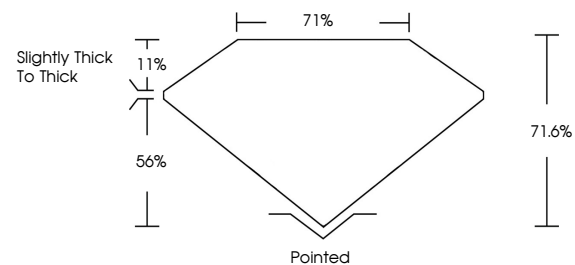
**GRADING RESULTS**

Carat Weight **2.53 CARATS**

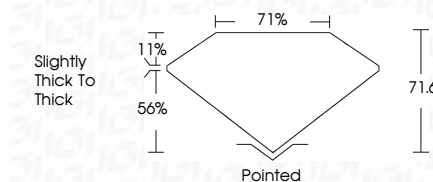
Color Grade **E**

Clarity Grade **VVS 1**

**PROPORTIONS**



Sample Image Used



**ADDITIONAL GRADING INFORMATION**

Polish **EXCELLENT**

Symmetry **EXCELLENT**

Fluorescence **NONE**

Inscription(s) **IGI LG776622273**

Comments: This Laboratory Grown Diamond was created by Chemical Vapor Deposition (CVD) growth process. Type IIa



**IGI**

**COLOR**

D E F G H I J Faint Very Light Light

**CLARITY**

FL	IF	VS <sup>1-2</sup>	VS <sup>1-2</sup>	SI <sup>1-2</sup>	I <sup>1-3</sup>
Flawless	Internally Flawless	Very Very Slightly Included	Very Slightly Included	Slightly Included	Included

February 26, 2026  
IGI Report No LG776622273  
**PRINCESS CUT**

**7.46 X 7.32 X 5.24 MM**

Carat Weight **2.53 CARATS**  
Color Grade **E**  
Clarity Grade **VVS 1**  
Depth **71.6%**  
Table **71%**  
Girdle **Slightly thick to thick**

Culet **Pointed**  
Polish **EXCELLENT**  
Symmetry **EXCELLENT**  
Fluorescence **NONE**  
Inscription(s) **IGI LG776622273**

Comments: This Laboratory Grown Diamond was created by Chemical Vapor Deposition (CVD) growth process. Type IIa

