



ELECTRONIC COPY

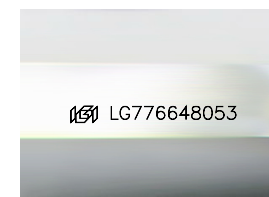
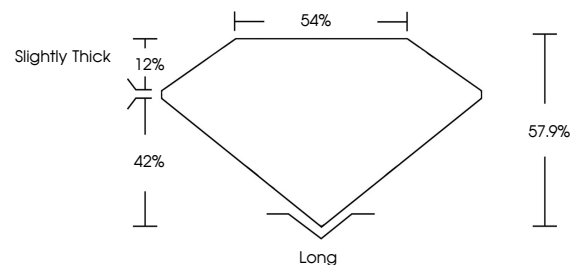
LG776648053
Report verification at igi.org



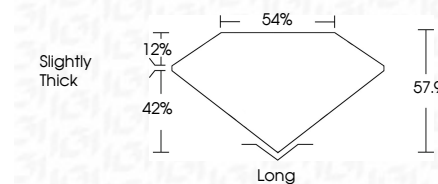
February 21, 2026
IGI Report Number **LG776648053**
Description **LABORATORY GROWN DIAMOND**
Shape and Cutting Style **HEPTAGONAL MODIFIED STEP CUT**
Measurements **11.03 X 7.29 X 4.22 MM**
GRADING RESULTS
Carat Weight **2.33 CARATS**
Color Grade **E**
Clarity Grade **VVS 2**

February 21, 2026
IGI Report Number **LG776648053**
Description **LABORATORY GROWN DIAMOND**
Shape and Cutting Style **HEPTAGONAL MODIFIED STEP CUT**
Measurements **11.03 X 7.29 X 4.22 MM**
GRADING RESULTS
Carat Weight **2.33 CARATS**
Color Grade **E**
Clarity Grade **VVS 2**

PROPORTIONS



Sample Image Used



ADDITIONAL GRADING INFORMATION

Polish **EXCELLENT**
Symmetry **EXCELLENT**
Fluorescence **NONE**
Inscription(s) **IGI LG776648053**

Comments: This Laboratory Grown Diamond was created by Chemical Vapor Deposition (CVD) growth process.
Type IIa

ADDITIONAL GRADING INFORMATION

Polish **EXCELLENT**
Symmetry **EXCELLENT**
Fluorescence **NONE**
Inscription(s) **IGI LG776648053**
Comments: This Laboratory Grown Diamond was created by Chemical Vapor Deposition (CVD) growth process.
Type IIa

COLOR

D E F G H I J Faint Very Light Light

CLARITY

FL	IF	VVS ¹⁻²	VS ¹⁻²	SI ¹⁻²	I ¹⁻³
Flawless	Internally Flawless	Very Very Slightly Included	Very Slightly Included	Slightly Included	Included



IGI



February 21, 2026
IGI Report No **LG776648053**
HEPTAGONAL MODIFIED STEP CUT
2.33 CARATS
E
VVS 2
57.9%
54%
Slightly Thick
Long
EXCELLENT
EXCELLENT
NONE
IGI LG776648053

Comments: This Laboratory Grown Diamond was created by Chemical Vapor Deposition (CVD) growth process.
Type IIa