



ELECTRONIC COPY

LG776684827
Report verification at igi.org



February 21, 2026

IGI Report Number **LG776684827**

Description **LABORATORY GROWN DIAMOND**

Shape and Cutting Style **PRINCESS CUT**

Measurements **5.76 X 5.66 X 4.16 MM**

GRADING RESULTS

Carat Weight **1.17 CARAT**

Color Grade **E**

Clarity Grade **VS 1**

February 21, 2026

IGI Report Number **LG776684827**

Description **LABORATORY GROWN DIAMOND**

Shape and Cutting Style **PRINCESS CUT**

Measurements **5.76 X 5.66 X 4.16 MM**

GRADING RESULTS

Carat Weight **1.17 CARAT**

Color Grade **E**

Clarity Grade **VS 1**

ADDITIONAL GRADING INFORMATION

Polish **EXCELLENT**

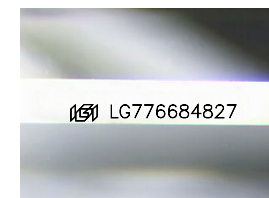
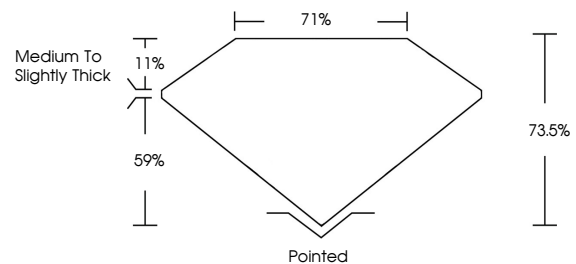
Symmetry **EXCELLENT**

Fluorescence **NONE**

Inscription(s) **IGI LG776684827**

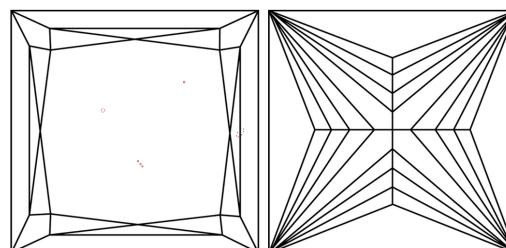
Comments: This Laboratory Grown Diamond was created by Chemical Vapor Deposition (CVD) growth process. Type IIa

PROPORTIONS



Sample Image Used

CLARITY CHARACTERISTICS



KEY TO SYMBOLS

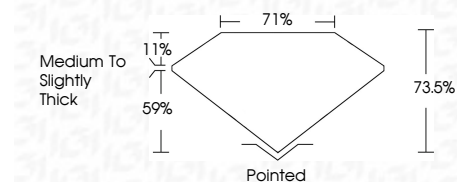
Red symbols indicate internal characteristics.
Green symbols indicate external characteristics.

COLOR

D E F G H I J Faint Very Light Light

CLARITY

FL	IF	VS ¹⁻²	VS ¹⁻²	SI ¹⁻²	I ¹⁻³
Flawless	Internally Flawless	Very Very Slightly Included	Very Slightly Included	Slightly Included	Included



ADDITIONAL GRADING INFORMATION

Polish **EXCELLENT**

Symmetry **EXCELLENT**

Fluorescence **NONE**

Inscription(s) **IGI LG776684827**

Comments: This Laboratory Grown Diamond was created by Chemical Vapor Deposition (CVD) growth process. Type IIa



IGI



February 21, 2026
IGI Report No LG776684827
PRINCESS CUT

1.17 CARAT
E

5.76 X 5.66 X 4.16 MM

Carat Weight
Color Grade
Clarity Grade
Depth
Table
Girdle
Medium to Slightly Thick

VS 1
73.5%
71%

Pointed
EXCELLENT
EXCELLENT
NONE
IGI LG776684827

Culet
Polish
Symmetry
Fluorescence
Inscription(s)

Comments: This Laboratory Grown Diamond was created by Chemical Vapor Deposition (CVD) growth process. Type IIa