



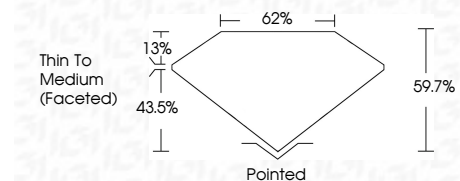
ELECTRONIC COPY

LG778631240
Report verification at igi.org



February 24, 2026
IGI Report Number LG778631240
Description LABORATORY GROWN DIAMOND
Shape and Cutting Style MARQUISE BRILLIANT
Measurements 12.40 X 6.25 X 3.73 MM

GRADING RESULTS
Carat Weight 1.59 CARAT
Color Grade E
Clarity Grade VVS 2



ADDITIONAL GRADING INFORMATION
Polish EXCELLENT
Symmetry EXCELLENT
Fluorescence NONE
Inscription(s) IGI LG778631240
Comments: This Laboratory Grown Diamond was created by Chemical Vapor Deposition (CVD) growth process. Type IIa



February 24, 2026
IGI Report No LG778631240
MARQUISE BRILLIANT
1.59 CARAT E
VVS 2
62%
Thin To Medium (Faceted)
Pointed
EXCELLENT
EXCELLENT
NONE
IGI LG778631240
Comments: This Laboratory Grown Diamond was created by Chemical Vapor Deposition (CVD) growth process. Type IIa

LABORATORY GROWN DIAMOND REPORT

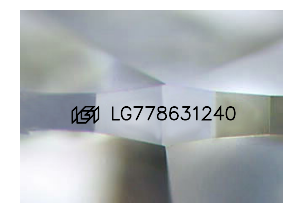
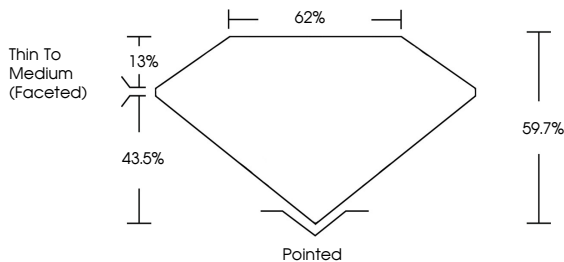
February 24, 2026
IGI Report Number LG778631240
Description LABORATORY GROWN DIAMOND
Shape and Cutting Style MARQUISE BRILLIANT
Measurements 12.40 X 6.25 X 3.73 MM

GRADING RESULTS
Carat Weight 1.59 CARAT
Color Grade E
Clarity Grade VVS 2

ADDITIONAL GRADING INFORMATION
Polish EXCELLENT
Symmetry EXCELLENT
Fluorescence NONE
Inscription(s) IGI LG778631240

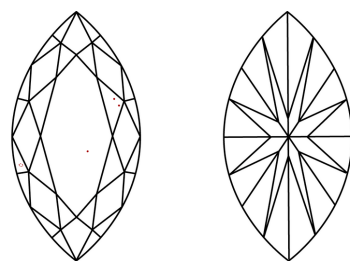
Comments: This Laboratory Grown Diamond was created by Chemical Vapor Deposition (CVD) growth process. Type IIa

PROPORTIONS



Sample Image Used

CLARITY CHARACTERISTICS



KEY TO SYMBOLS
Red symbols indicate internal characteristics.
Green symbols indicate external characteristics.

Table with columns D, E, F, G, H, I, J, Faint, Very Light, Light

Table with columns FL, IF, VVS 1-2, VS 1-2, SI 1-2, I 1-3 and corresponding descriptions: Flawless, Internally Flawless, Very Very Slightly Included, Very Slightly Included, Slightly Included, Included



THIS DOCUMENT WAS PRODUCED WITH THE FOLLOWING SECURITY MEASURES: SPECIAL DOCUMENT PAPER, INK SCREENS, WATERMARK BACKGROUND DESIGNS, HOLOGRAM AND OTHER SECURITY FEATURES NOT LISTED AND DO EXCEED DOCUMENT SECURITY INDUSTRY GUIDELINES.