



ELECTRONIC COPY

LABORATORY GROWN DIAMOND REPORT

February 28, 2026
IGI Report Number **LG779641708**

Description **LABORATORY GROWN DIAMOND**

Shape and Cutting Style **HEPTAGONAL MODIFIED STEP CUT**

Measurements **9.69 X 6.24 X 3.54 MM**

GRADING RESULTS

Carat Weight **1.55 CARAT**

Color Grade **D**

Clarity Grade **VS 1**

ADDITIONAL GRADING INFORMATION

Polish **EXCELLENT**

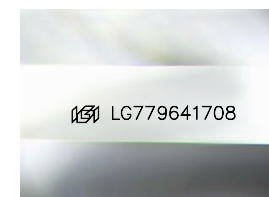
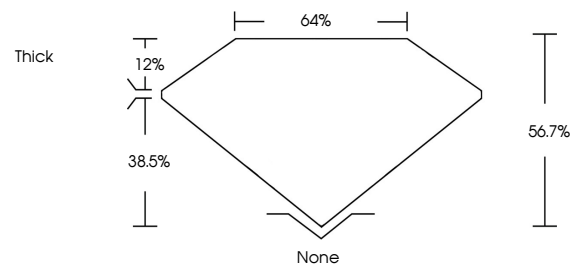
Symmetry **EXCELLENT**

Fluorescence **NONE**

Inscription(s) **IGI LG779641708**

Comments: This Laboratory Grown Diamond was created by Chemical Vapor Deposition (CVD) growth process.
Type IIa

PROPORTIONS



Sample Image Used

COLOR

D E F G H I J Faint Very Light Light

CLARITY

FL	IF	VS ¹⁻²	VS ¹⁻²	SI ¹⁻²	I ¹⁻³
Flawless	Internally Flawless	Very Very Slightly Included	Very Slightly Included	Slightly Included	Included



February 28, 2026

IGI Report Number **LG779641708**

Description **LABORATORY GROWN DIAMOND**

Shape and Cutting Style **HEPTAGONAL MODIFIED STEP CUT**

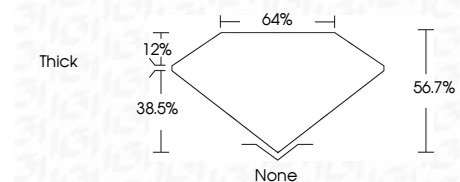
Measurements **9.69 X 6.24 X 3.54 MM**

GRADING RESULTS

Carat Weight **1.55 CARAT**

Color Grade **D**

Clarity Grade **VS 1**



ADDITIONAL GRADING INFORMATION

Polish **EXCELLENT**

Symmetry **EXCELLENT**

Fluorescence **NONE**

Inscription(s) **IGI LG779641708**

Comments: This Laboratory Grown Diamond was created by Chemical Vapor Deposition (CVD) growth process.
Type IIa



IGI



February 28, 2026
IGI Report No LG779641708
HEPTAGONAL MODIFIED STEP CUT

9.69 X 6.24 X 3.54 MM

1.55 CARAT
D

VS 1
56.7%
64%
Thick

None
EXCELLENT
EXCELLENT
NONE
IGI LG779641708

Comments: This Laboratory Grown Diamond was created by Chemical Vapor Deposition (CVD) growth process.
Type IIa