



ELECTRONIC COPY

LG779650058
Report verification at igi.org



March 8, 2026
IGI Report Number **LG779650058**
Description **LABORATORY GROWN DIAMOND**
Shape and Cutting Style **ROUND BRILLIANT**
Measurements **6.48 - 6.51 X 3.95 MM**
GRADING RESULTS
Carat Weight **1.02 CARAT**
Color Grade **F**
Clarity Grade **VS 1**
Cut Grade **IDEAL**

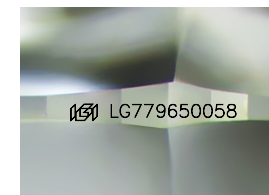
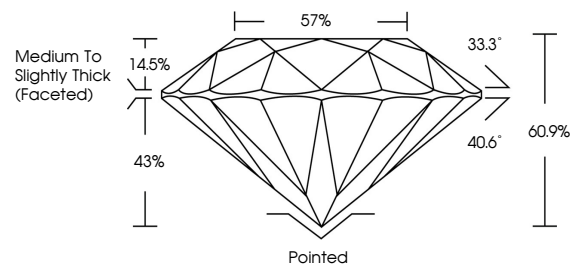
March 8, 2026
IGI Report Number **LG779650058**
Description **LABORATORY GROWN DIAMOND**
Shape and Cutting Style **ROUND BRILLIANT**
Measurements **6.48 - 6.51 X 3.95 MM**
GRADING RESULTS
Carat Weight **1.02 CARAT**
Color Grade **F**
Clarity Grade **VS 1**
Cut Grade **IDEAL**

ADDITIONAL GRADING INFORMATION

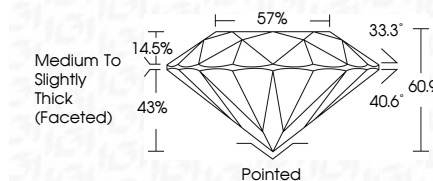
Polish **EXCELLENT**
Symmetry **EXCELLENT**
Fluorescence **NONE**
Inscription(s) **IGI LG779650058**

Comments: This Laboratory Grown Diamond was created by Chemical Vapor Deposition (CVD) growth process. Type IIa

PROPORTIONS



Sample Image Used



COLOR

D E F G H I J Faint Very Light Light

CLARITY

FL	IF	VS ¹⁻²	VS ¹⁻²	SI ¹⁻²	I ¹⁻³
Flawless	Internally Flawless	Very Very Slightly Included	Very Slightly Included	Slightly Included	Included

ADDITIONAL GRADING INFORMATION

Polish **EXCELLENT**
Symmetry **EXCELLENT**
Fluorescence **NONE**
Inscription(s) **IGI LG779650058**
Comments: This Laboratory Grown Diamond was created by Chemical Vapor Deposition (CVD) growth process. Type IIa



IGI



March 8, 2026
IGI Report No **LG779650058**
ROUND BRILLIANT
6.48 - 6.51 X 3.95 MM
Carat Weight **1.02 CARAT**
Color Grade **F**
Clarity Grade **VS 1**
Depth **60.9%**
Table **57%**
Girdle **Medium To Slightly Thick (Faceted)**
Culet **Pointed**
Polish **EXCELLENT**
Symmetry **EXCELLENT**
Fluorescence **NONE**
Inscriptions(s) **IGI LG779650058**
Comments: This Laboratory Grown Diamond was created by Chemical Vapor Deposition (CVD) growth process. Type IIa