



ELECTRONIC COPY

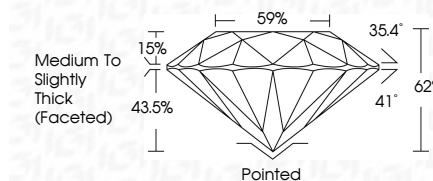
LG780686672
Report verification at igi.org



April 13, 2026
IGI Report Number LG780686672
Description LABORATORY GROWN DIAMOND
Shape and Cutting Style ROUND BRILLIANT
Measurements 6.42 - 6.45 X 4.00 MM

GRADING RESULTS

Carat Weight 1.03 CARAT
Color Grade E
Clarity Grade VS 1
Cut Grade IDEAL



ADDITIONAL GRADING INFORMATION

Polish EXCELLENT
Symmetry EXCELLENT
Fluorescence NONE
Inscription(s) IGI LG780686672
Comments: This Laboratory Grown Diamond was created by Chemical Vapor Deposition (CVD) growth process. Type IIa



April 13, 2026
IGI Report No LG780686672
ROUND BRILLIANT
6.42 - 6.45 X 4.00 MM
1.03 CARAT
E
VS 1
IDEAL
62%
59%
Medium To Slightly Thick (Faceted)
Pointed
EXCELLENT
EXCELLENT
NONE
IGI LG780686672
Comments: This Laboratory Grown Diamond was created by Chemical Vapor Deposition (CVD) growth process. Type IIa

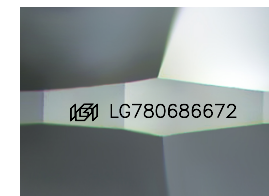
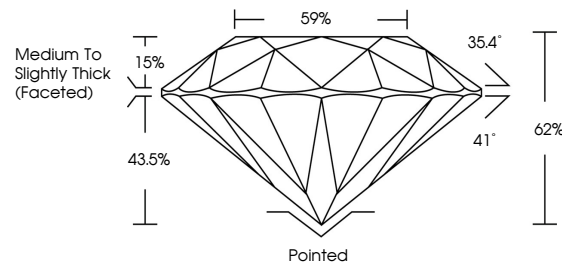
April 13, 2026
IGI Report Number LG780686672
Description LABORATORY GROWN DIAMOND
Shape and Cutting Style ROUND BRILLIANT
Measurements 6.42 - 6.45 X 4.00 MM
GRADING RESULTS
Carat Weight 1.03 CARAT
Color Grade E
Clarity Grade VS 1
Cut Grade IDEAL

ADDITIONAL GRADING INFORMATION

Polish EXCELLENT
Symmetry EXCELLENT
Fluorescence NONE
Inscription(s) IGI LG780686672

Comments: This Laboratory Grown Diamond was created by Chemical Vapor Deposition (CVD) growth process. Type IIa

PROPORTIONS



Sample Image Used

COLOR

D E F G H I J Faint Very Light Light

CLARITY

FL IF VS 1-2 VS 2-3 SI 1-2 I 1-3
Flawless Internally Flawless Very Very Slightly Included Very Slightly Included Slightly Included Included

