



ELECTRONIC COPY

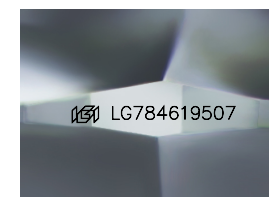
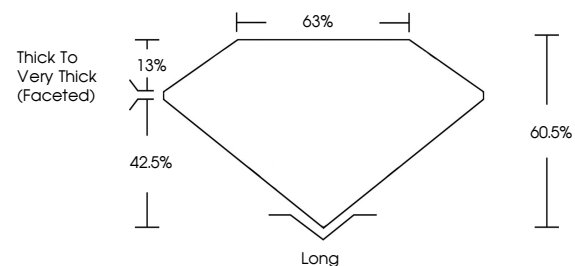
LG784619507
Report verification at igi.org



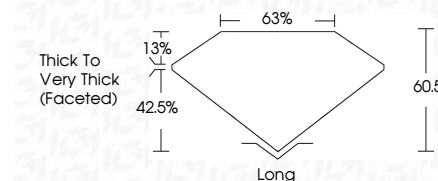
March 25, 2026
IGI Report Number **LG784619507**
Description **LABORATORY GROWN DIAMOND**
Shape and Cutting Style **CUSHION MIXED CUT**
Measurements **10.30 X 7.29 X 4.41 MM**
GRADING RESULTS
Carat Weight **3.05 CARATS**
Color Grade **E**
Clarity Grade **VS 1**

March 25, 2026
IGI Report Number **LG784619507**
Description **LABORATORY GROWN DIAMOND**
Shape and Cutting Style **CUSHION MIXED CUT**
Measurements **10.30 X 7.29 X 4.41 MM**
GRADING RESULTS
Carat Weight **3.05 CARATS**
Color Grade **E**
Clarity Grade **VS 1**

PROPORTIONS



Sample Image Used



ADDITIONAL GRADING INFORMATION

Polish **EXCELLENT**
Symmetry **EXCELLENT**
Fluorescence **NONE**
Inscription(s) **IGI LG784619507**

Comments: This Laboratory Grown Diamond was created by Chemical Vapor Deposition (CVD) growth process.
Type IIa

ADDITIONAL GRADING INFORMATION

Polish **EXCELLENT**
Symmetry **EXCELLENT**
Fluorescence **NONE**
Inscription(s) **IGI LG784619507**
Comments: This Laboratory Grown Diamond was created by Chemical Vapor Deposition (CVD) growth process.
Type IIa

COLOR

D E F G H I J Faint Very Light Light

CLARITY

FL	IF	VS ¹⁻²	VS ¹⁻²	SI ¹⁻²	I ¹⁻³
Flawless	Internally Flawless	Very Very Slightly Included	Very Slightly Included	Slightly Included	Included



IGI



March 25, 2026
IGI Report No **LG784619507**
CUSHION MIXED CUT
10.30 X 7.29 X 4.41 MM
3.05 CARATS
E
VS 1
60.5%
63%
Thick To Very Thick (Faceted)
Long
EXCELLENT
EXCELLENT
NONE
IGI LG784619507

Comments: This Laboratory Grown Diamond was created by Chemical Vapor Deposition (CVD) growth process.
Type IIa