



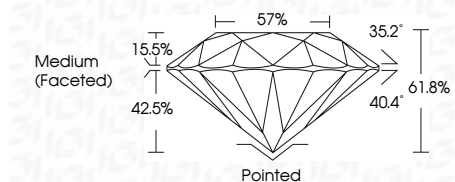
ELECTRONIC COPY

LG788671438
Report verification at igi.org



April 7, 2026
IGI Report Number **LG788671438**
Description **LABORATORY GROWN DIAMOND**
Shape and Cutting Style **ROUND BRILLIANT**
Measurements **7.29 - 7.32 X 4.52 MM**

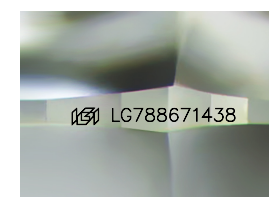
GRADING RESULTS
Carat Weight **1.50 CARAT**
Color Grade **D**
Clarity Grade **VS 1**
Cut Grade **IDEAL**



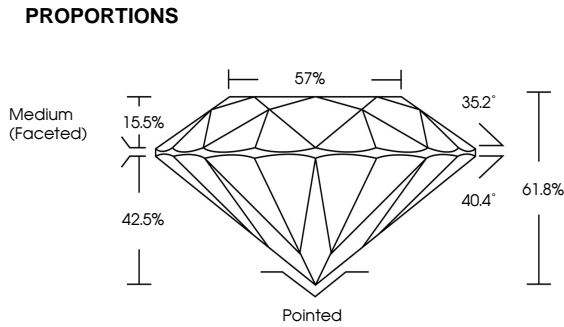
ADDITIONAL GRADING INFORMATION
Polish **EXCELLENT**
Symmetry **EXCELLENT**
Fluorescence **NONE**
Inscription(s) **IGI LG788671438**
Comments: As Grown - No indication of post-growth treatment.
This Laboratory Grown Diamond was created by High Pressure High Temperature (HPHT) growth process.
Type II



April 7, 2026
IGI Report No **LG788671438**
ROUND BRILLIANT
7.29 - 7.32 X 4.52 MM
1.50 CARAT
Color Grade **D**
Clarity Grade **VS 1**
Cut Grade **IDEAL**
Depth **61.8%**
Table **57%**
Girdle **Medium (Faceted)**
Culet **Pointed**
Polish **EXCELLENT**
Symmetry **EXCELLENT**
Fluorescence **NONE**
Inscriptions(s) **IGI LG788671438**
Comments: As Grown - No indication of post-growth treatment.
This Laboratory Grown Diamond was created by High Pressure High Temperature (HPHT) growth process.
Type II



Sample Image Used



COLOR

D	E	F	G	H	I	J	Faint	Very Light	Light
---	---	---	---	---	---	---	-------	------------	-------

CLARITY

FL	IF	VS ¹⁻²	VS ¹⁻²	SI ¹⁻²	I ¹⁻³
Flawless	Internally Flawless	Very Very Slightly Included	Very Slightly Included	Slightly Included	Included



April 7, 2026
IGI Report Number **LG788671438**
Description **LABORATORY GROWN DIAMOND**
Shape and Cutting Style **ROUND BRILLIANT**
Measurements **7.29 - 7.32 X 4.52 MM**
GRADING RESULTS
Carat Weight **1.50 CARAT**
Color Grade **D**
Clarity Grade **VS 1**
Cut Grade **IDEAL**
ADDITIONAL GRADING INFORMATION
Polish **EXCELLENT**
Symmetry **EXCELLENT**
Fluorescence **NONE**
Inscription(s) **IGI LG788671438**
Comments: As Grown - No indication of post-growth treatment.
This Laboratory Grown Diamond was created by High Pressure High Temperature (HPHT) growth process.
Type II