



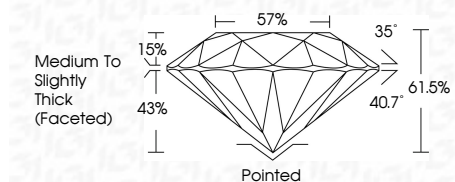
ELECTRONIC COPY

LG788671531 Report verification at igi.org



April 4, 2026 IGI Report Number LG788671531 Description LABORATORY GROWN DIAMOND Shape and Cutting Style ROUND BRILLIANT Measurements 7.31 - 7.37 X 4.52 MM

GRADING RESULTS Carat Weight 1.50 CARAT Color Grade D Clarity Grade VS 1 Cut Grade IDEAL



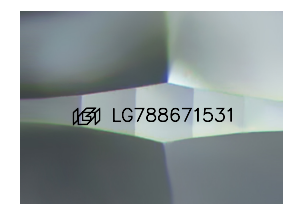
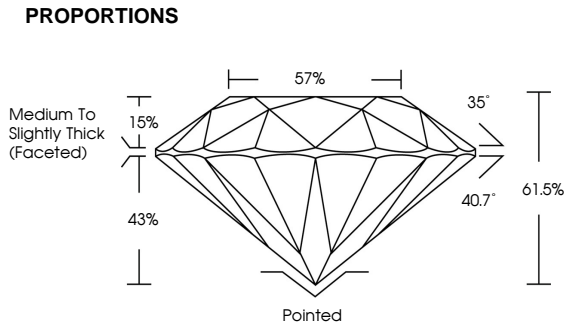
ADDITIONAL GRADING INFORMATION Polish EXCELLENT Symmetry EXCELLENT Fluorescence NONE Inscription(s) LG788671531 Comments: As Grown - No indication of post-growth treatment. This Laboratory Grown Diamond was created by High Pressure High Temperature (HPHT) growth process. Type II



April 4, 2026 IGI Report No LG788671531 ROUND BRILLIANT 1.50 CARAT D 7.31 - 7.37 X 4.52 MM VS 1 IDEAL 61.5% 57% Medium To Slightly Thick (Faceted) Pointed EXCELLENT EXCELLENT NONE NONE LG788671531

April 4, 2026 IGI Report Number LG788671531 Description LABORATORY GROWN DIAMOND Shape and Cutting Style ROUND BRILLIANT Measurements 7.31 - 7.37 X 4.52 MM GRADING RESULTS Carat Weight 1.50 CARAT Color Grade D Clarity Grade VS 1 Cut Grade IDEAL

ADDITIONAL GRADING INFORMATION Polish EXCELLENT Symmetry EXCELLENT Fluorescence NONE Inscription(s) LG788671531 Comments: As Grown - No indication of post-growth treatment. This Laboratory Grown Diamond was created by High Pressure High Temperature (HPHT) growth process. Type II



Sample Image Used

Table with columns for Color grades: D, E, F, G, H, I, J, Faint, Very Light, Light

Table with columns for Clarity grades: FL, IF, VS 1-2, VS 1-2, SI 1-2, I 1-3

