



ELECTRONIC COPY

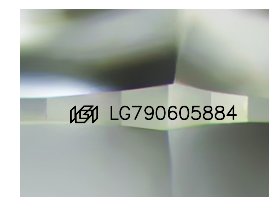
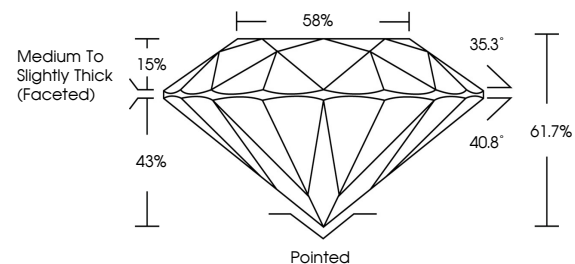
LG790605884
Report verification at igi.org



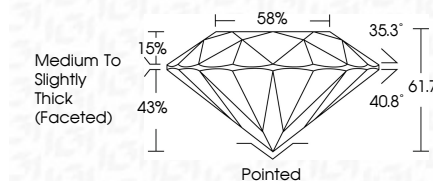
April 13, 2026
IGI Report Number **LG790605884**
Description **LABORATORY GROWN DIAMOND**
Shape and Cutting Style **ROUND BRILLIANT**
Measurements **6.49 - 6.52 X 4.02 MM**
GRADING RESULTS
Carat Weight **1.05 CARAT**
Color Grade **E**
Clarity Grade **VS 1**
Cut Grade **IDEAL**

April 13, 2026
IGI Report Number **LG790605884**
Description **LABORATORY GROWN DIAMOND**
Shape and Cutting Style **ROUND BRILLIANT**
Measurements **6.49 - 6.52 X 4.02 MM**
GRADING RESULTS
Carat Weight **1.05 CARAT**
Color Grade **E**
Clarity Grade **VS 1**
Cut Grade **IDEAL**

PROPORTIONS



Sample Image Used



ADDITIONAL GRADING INFORMATION
Polish **EXCELLENT**
Symmetry **EXCELLENT**
Fluorescence **NONE**
Inscription(s) **IGI LG790605884**

Comments: This Laboratory Grown Diamond was created by Chemical Vapor Deposition (CVD) growth process. Type IIa

COLOR

D E F G H I J Faint Very Light Light

CLARITY

FL	IF	VS ¹⁻²	VS ¹⁻²	SI ¹⁻²	I ¹⁻³
Flawless	Internally Flawless	Very Very Slightly Included	Very Slightly Included	Slightly Included	Included

ADDITIONAL GRADING INFORMATION

Polish **EXCELLENT**
Symmetry **EXCELLENT**
Fluorescence **NONE**
Inscription(s) **IGI LG790605884**
Comments: This Laboratory Grown Diamond was created by Chemical Vapor Deposition (CVD) growth process. Type IIa



IGI



April 13, 2026
IGI Report No **LG790605884**
ROUND BRILLIANT
6.49 - 6.52 X 4.02 MM
1.05 CARAT
E
VS 1
IDEAL
61.7%
58%
Medium To Slightly Thick (Faceted)
Pointed
EXCELLENT
EXCELLENT
NONE
IGI LG790605884
Comments: This Laboratory Grown Diamond was created by Chemical Vapor Deposition (CVD) growth process. Type IIa