



ELECTRONIC COPY

LG791628925
Report verification at igi.org



April 20, 2026

IGI Report Number LG791628925

Description LABORATORY GROWN DIAMOND

Shape and Cutting Style PRINCESS CUT

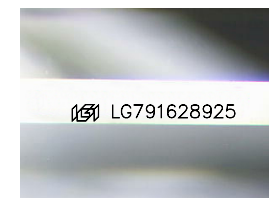
Measurements 6.79 X 6.65 X 4.85 MM

GRADING RESULTS

Carat Weight 1.94 CARAT

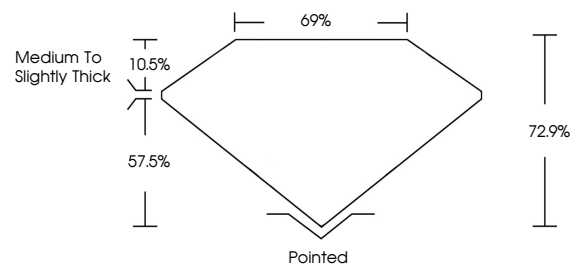
Color Grade D

Clarity Grade VVS 2

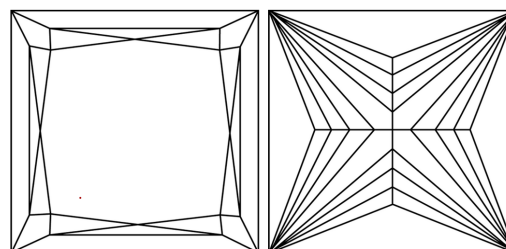


Sample Image Used

PROPORTIONS



CLARITY CHARACTERISTICS



KEY TO SYMBOLS

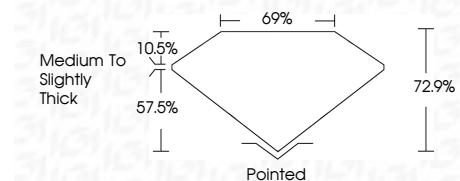
Red symbols indicate internal characteristics. Green symbols indicate external characteristics.

COLOR

D E F G H I J Faint Very Light Light

CLARITY

FL IF VVS 1-2 VS 1-2 SI 1-2 I 1-3
Flawless Internally Flawless Very Very Slightly Included Very Slightly Included Slightly Included Included



ADDITIONAL GRADING INFORMATION

Polish EXCELLENT

Symmetry EXCELLENT

Fluorescence NONE

Inscription(s) IGI LG791628925

Comments: This Laboratory Grown Diamond was created by Chemical Vapor Deposition (CVD) growth process. Type IIa



Summary of report details including date, report number, description, measurements, grading results, and additional information.

Comments: This Laboratory Grown Diamond was created by Chemical Vapor Deposition (CVD) growth process. Type IIa