



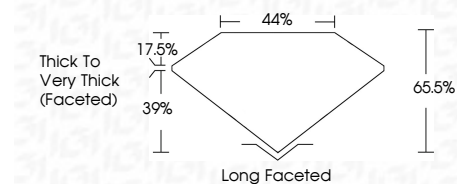
ELECTRONIC COPY

LG792635704
Report verification at igi.org



April 22, 2026
IGI Report Number LG792635704
Description LABORATORY GROWN DIAMOND
Shape and Cutting Style CUSHION BRILLIANT
Measurements 9.75 X 6.38 X 4.18 MM

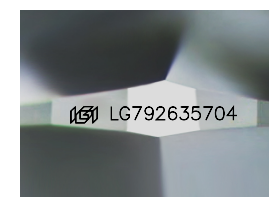
GRADING RESULTS
Carat Weight 2.12 CARATS
Color Grade E
Clarity Grade VS 1



ADDITIONAL GRADING INFORMATION
Polish EXCELLENT
Symmetry EXCELLENT
Fluorescence NONE
Inscription(s) IGI LG792635704
Comments: This Laboratory Grown Diamond was created by Chemical Vapor Deposition (CVD) growth process. Type IIa

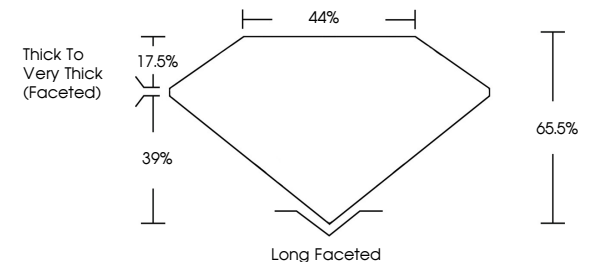


April 22, 2026
IGI Report No LG792635704
CUSHION BRILLIANT
2.12 CARATS E
9.75 X 6.38 X 4.18 MM
Color Grade E
Clarity Grade VS 1
Depth 65.5%
Table 44%
Girdle Thick to Very Thick (Faceted)
Culet Long Faceted
Polish EXCELLENT
Symmetry EXCELLENT
Fluorescence NONE
Inscription(s) IGI LG792635704
Comments: This Laboratory Grown Diamond was created by Chemical Vapor Deposition (CVD) growth process. Type IIa

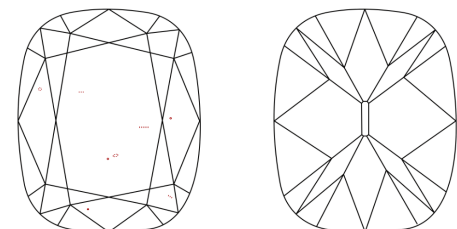


Sample Image Used

PROPORTIONS



CLARITY CHARACTERISTICS



KEY TO SYMBOLS
Red symbols indicate internal characteristics.
Green symbols indicate external characteristics.

COLOR

Table with color grades: D, E, F, G, H, I, J, Faint, Very Light, Light

CLARITY

Table with clarity grades: FL, IF, VS 1-2, VVS 1-2, SI 1-2, I 1-3

