



ELECTRONIC COPY

LG792664635
Report verification at igi.org



May 21, 2026
IGI Report Number **LG792664635**
Description **LABORATORY GROWN DIAMOND**
Shape and Cutting Style **PENTAGONAL MODIFIED BRILLIANT**
Measurements **8.05 X 11.38 X 5.49 MM**
GRADING RESULTS
Carat Weight **3.53 CARATS**
Color Grade **E**
Clarity Grade **VS 1**

LABORATORY GROWN DIAMOND REPORT

May 21, 2026
IGI Report Number **LG792664635**
Description **LABORATORY GROWN DIAMOND**
Shape and Cutting Style **PENTAGONAL MODIFIED BRILLIANT**
Measurements **8.05 X 11.38 X 5.49 MM**

GRADING RESULTS

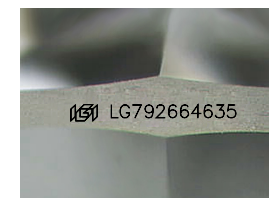
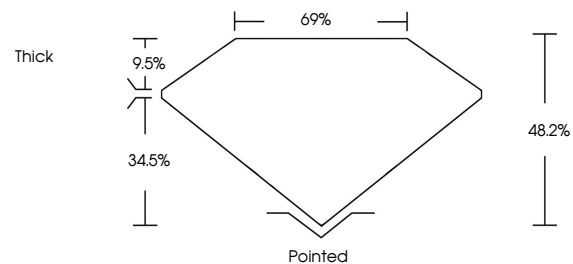
Carat Weight **3.53 CARATS**
Color Grade **E**
Clarity Grade **VS 1**

ADDITIONAL GRADING INFORMATION

Polish **EXCELLENT**
Symmetry **EXCELLENT**
Fluorescence **NONE**
Inscription(s) **IGI LG792664635**

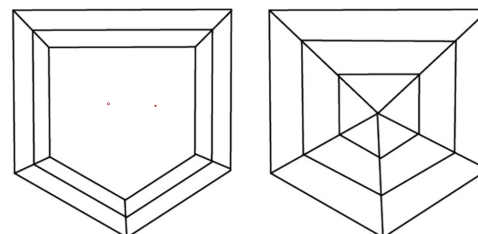
Comments: This Laboratory Grown Diamond was created by Chemical Vapor Deposition (CVD) growth process.
Type IIa

PROPORTIONS



Sample Image Used

CLARITY CHARACTERISTICS



KEY TO SYMBOLS

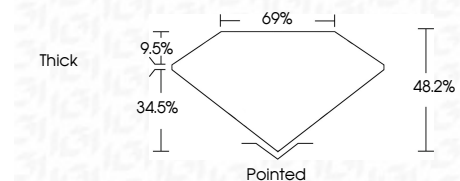
Red symbols indicate internal characteristics.
Green symbols indicate external characteristics.

COLOR

D E F G H I J Faint Very Light Light

CLARITY

| FL | IF | VS ¹⁻² | VS ¹⁻² | SI ¹⁻² | I ¹⁻³ |
|----------|---------------------|-----------------------------|------------------------|-------------------|------------------|
| Flawless | Internally Flawless | Very Very Slightly Included | Very Slightly Included | Slightly Included | Included |



ADDITIONAL GRADING INFORMATION

Polish **EXCELLENT**
Symmetry **EXCELLENT**
Fluorescence **NONE**
Inscription(s) **IGI LG792664635**
Comments: This Laboratory Grown Diamond was created by Chemical Vapor Deposition (CVD) growth process.
Type IIa



IGI



May 21, 2026
IGI Report No **LG792664635**
PENTAGONAL MODIFIED BRILLIANT
8.05 X 11.38 X 5.49 MM
Carat Weight **3.53 CARATS**
Color Grade **E**
Clarity Grade **VS 1**
Depth **48.2%**
Table **69%**
Girdle **Thick**
Culet **Pointed**
Polish **EXCELLENT**
Symmetry **EXCELLENT**
Fluorescence **NONE**
Inscription(s) **IGI LG792664635**
Comments: This Laboratory Grown Diamond was created by Chemical Vapor Deposition (CVD) growth process.
Type IIa