



ELECTRONIC COPY

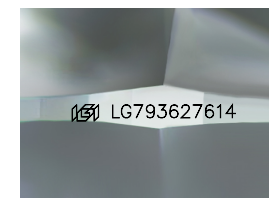
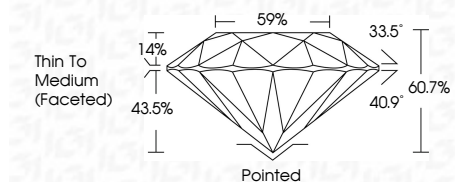
LG793627614 Report verification at igi.org



April 22, 2026 IGI Report Number LG793627614 Description LABORATORY GROWN DIAMOND Shape and Cutting Style ROUND BRILLIANT Measurements 6.57 - 6.59 X 3.99 MM

GRADING RESULTS

Carat Weight 1.05 CARAT Color Grade D Clarity Grade VVS 2 Cut Grade IDEAL



Sample Image Used

ADDITIONAL GRADING INFORMATION

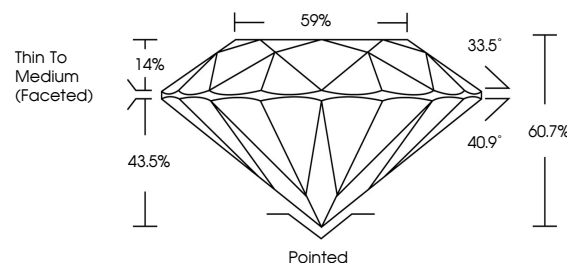
Polish EXCELLENT Symmetry EXCELLENT Fluorescence NONE Inscription(s) LG793627614 Comments: As Grown - No indication of post-growth treatment. This Laboratory Grown Diamond was created by High Pressure High Temperature (HPHT) growth process. Type II



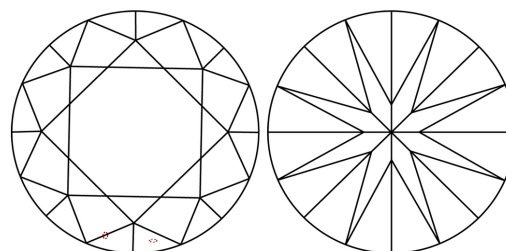
April 22, 2026 IGI Report No LG793627614 ROUND BRILLIANT 6.57 - 6.59 X 3.99 MM 1.05 CARAT D VVS 2 IDEAL 60.7% 59% Thin To Medium (Faceted) Pointed EXCELLENT EXCELLENT NONE LG793627614

Comments: As Grown - No indication of post-growth treatment. This Laboratory Grown Diamond was created by High Pressure High Temperature (HPHT) growth process. Type II

PROPORTIONS



CLARITY CHARACTERISTICS



KEY TO SYMBOLS

Red symbols indicate internal characteristics. Green symbols indicate external characteristics.

COLOR

D E F G H I J Faint Very Light Light

CLARITY

FL IF VVS 1-2 VS 1-2 SI 1-2 I 1-3 Flawless Internally Flawless Very Very Slightly Included Very Slightly Included Slightly Included Included

