



ELECTRONIC COPY

LG794699899 Report verification at igi.org



April 29, 2026 IGI Report Number LG794699899 Description LABORATORY GROWN DIAMOND Shape and Cutting Style ROUND BRILLIANT Measurements 7.70 - 7.75 X 4.83 MM GRADING RESULTS Carat Weight 1.79 CARAT Color Grade D Clarity Grade VS 1 Cut Grade IDEAL

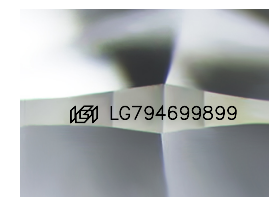
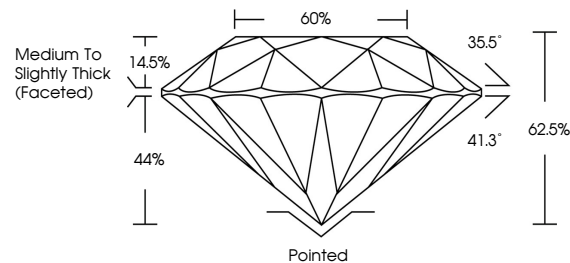
April 29, 2026 IGI Report Number LG794699899 Description LABORATORY GROWN DIAMOND Shape and Cutting Style ROUND BRILLIANT Measurements 7.70 - 7.75 X 4.83 MM GRADING RESULTS Carat Weight 1.79 CARAT Color Grade D Clarity Grade VS 1 Cut Grade IDEAL

ADDITIONAL GRADING INFORMATION

Polish EXCELLENT Symmetry EXCELLENT Fluorescence NONE Inscription(s) IGI LG794699899

Comments: This Laboratory Grown Diamond was created by Chemical Vapor Deposition (CVD) growth process. Type IIa

PROPORTIONS



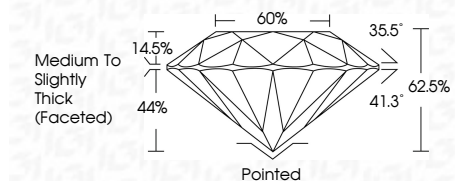
Sample Image Used

COLOR

D E F G H I J Faint Very Light Light

CLARITY

FL IF VS 1-2 VS 1-2 SI 1-2 I 1-3 Flawless Internally Flawless Very Very Slightly Included Very Slightly Included Slightly Included Included



ADDITIONAL GRADING INFORMATION

Polish EXCELLENT Symmetry EXCELLENT Fluorescence NONE Inscription(s) IGI LG794699899 Comments: This Laboratory Grown Diamond was created by Chemical Vapor Deposition (CVD) growth process. Type IIa



April 29, 2026 IGI Report No LG794699899 ROUND BRILLIANT 7.70 - 7.75 X 4.83 MM 1.79 CARAT D VS 1 IDEAL 62.5% 60% Medium To Slightly Thick (Faceted) Pointed EXCELLENT EXCELLENT NONE NONE IGI LG794699899 Comments: This Laboratory Grown Diamond was created by Chemical Vapor Deposition (CVD) growth process. Type IIa