



ELECTRONIC COPY

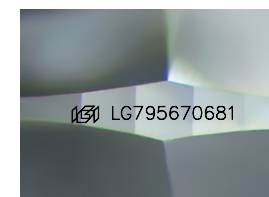
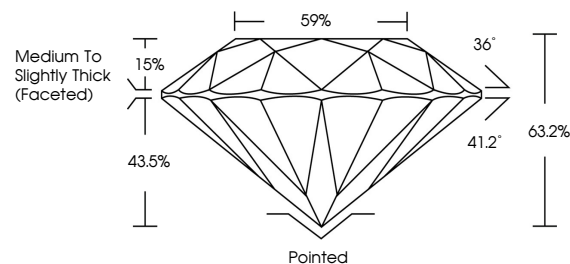
LG795670681 Report verification at igi.org



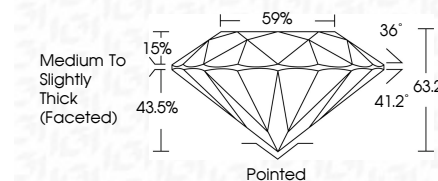
May 4, 2026 IGI Report Number LG795670681 Description LABORATORY GROWN DIAMOND Shape and Cutting Style ROUND BRILLIANT Measurements 7.24 - 7.28 X 4.59 MM GRADING RESULTS Carat Weight 1.51 CARAT Color Grade E Clarity Grade VVS 2 Cut Grade EXCELLENT

May 4, 2026 IGI Report Number LG795670681 Description LABORATORY GROWN DIAMOND Shape and Cutting Style ROUND BRILLIANT Measurements 7.24 - 7.28 X 4.59 MM GRADING RESULTS Carat Weight 1.51 CARAT Color Grade E Clarity Grade VVS 2 Cut Grade EXCELLENT

PROPORTIONS



Sample Image Used



ADDITIONAL GRADING INFORMATION

Polish EXCELLENT Symmetry EXCELLENT Fluorescence NONE Inscription(s) IGI LG795670681

Comments: This Laboratory Grown Diamond was created by Chemical Vapor Deposition (CVD) growth process. Type IIa

COLOR

D E F G H I J Faint Very Light Light

CLARITY

FL IF VS 1-2 VS 1-2 SI 1-2 I 1-3 Flawless Internally Flawless Very Very Slightly Included Very Slightly Included Slightly Included Included

ADDITIONAL GRADING INFORMATION

Polish EXCELLENT Symmetry EXCELLENT Fluorescence NONE Inscription(s) IGI LG795670681 Comments: This Laboratory Grown Diamond was created by Chemical Vapor Deposition (CVD) growth process. Type IIa



IGI

May 4, 2026 IGI Report No LG795670681 ROUND BRILLIANT 7.24 - 7.28 X 4.59 MM 1.51 CARAT E VVS 2 EXCELLENT 63.2% 59% Medium To Slightly Thick (Faceted) Pointed EXCELLENT EXCELLENT NONE NONE IGI LG795670681 Comments: This Laboratory Grown Diamond was created by Chemical Vapor Deposition (CVD) growth process. Type IIa