



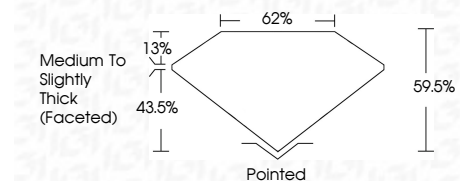
ELECTRONIC COPY

LG797619867 Report verification at igi.org



April 28, 2026 IGI Report Number LG797619867 Description LABORATORY GROWN DIAMOND Shape and Cutting Style OVAL BRILLIANT Measurements 11.19 X 8.04 X 4.78 MM

GRADING RESULTS Carat Weight 2.64 CARATS Color Grade E Clarity Grade VVS 2



ADDITIONAL GRADING INFORMATION Polish EXCELLENT Symmetry EXCELLENT Fluorescence NONE Inscription(s) IGI LG797619867 Comments: This Laboratory Grown Diamond was created by Chemical Vapor Deposition (CVD) growth process. Type IIa



April 28, 2026 IGI Report No LG797619867 OVAL BRILLIANT 2.64 CARATS E VVS 2 60.6% 62% Medium to Slightly Thick (Faceted) Pointed EXCELLENT EXCELLENT NONE NONE IGI LG797619867 Comments: This Laboratory Grown Diamond was created by Chemical Vapor Deposition (CVD) growth process. Type IIa

LABORATORY GROWN DIAMOND REPORT

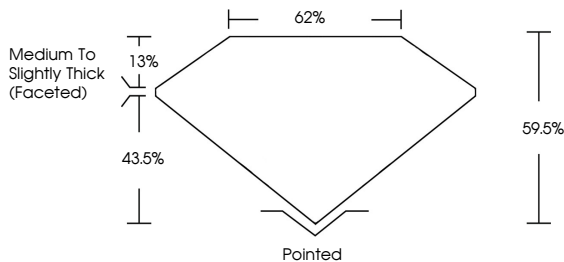
April 28, 2026 IGI Report Number LG797619867 Description LABORATORY GROWN DIAMOND Shape and Cutting Style OVAL BRILLIANT Measurements 11.19 X 8.04 X 4.78 MM

GRADING RESULTS Carat Weight 2.64 CARATS Color Grade E Clarity Grade VVS 2

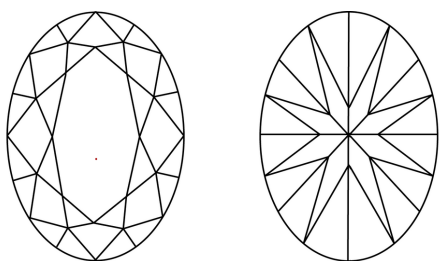
ADDITIONAL GRADING INFORMATION Polish EXCELLENT Symmetry EXCELLENT Fluorescence NONE Inscription(s) IGI LG797619867

Comments: This Laboratory Grown Diamond was created by Chemical Vapor Deposition (CVD) growth process. Type IIa

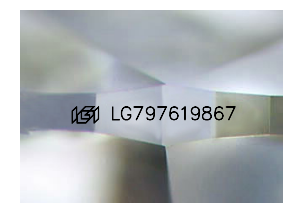
PROPORTIONS



CLARITY CHARACTERISTICS



KEY TO SYMBOLS Red symbols indicate internal characteristics. Green symbols indicate external characteristics.



Sample Image Used

COLOR scale from D to J, with Faint, Very Light, and Light categories.

CLARITY scale from FL to I 1-3, with sub-categories like Internally Flawless, Very Very Slightly Included, etc.

