



ELECTRONIC COPY

LG797622010
Report verification at igi.org



April 30, 2026

IGI Report Number **LG797622010**

Description **LABORATORY GROWN DIAMOND**

Shape and Cutting Style **ROUND BRILLIANT**

Measurements **6.47 - 6.60 X 4.01 MM**

GRADING RESULTS

Carat Weight **1.04 CARAT**

Color Grade **F**

Clarity Grade **VS 1**

Cut Grade **IDEAL**

April 30, 2026

IGI Report Number **LG797622010**

Description **LABORATORY GROWN DIAMOND**

Shape and Cutting Style **ROUND BRILLIANT**

Measurements **6.47 - 6.60 X 4.01 MM**

GRADING RESULTS

Carat Weight **1.04 CARAT**

Color Grade **F**

Clarity Grade **VS 1**

Cut Grade **IDEAL**

ADDITIONAL GRADING INFORMATION

Polish **EXCELLENT**

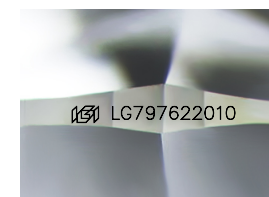
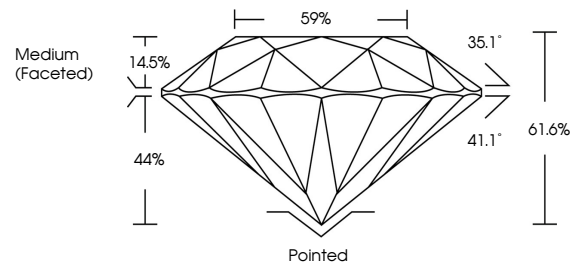
Symmetry **EXCELLENT**

Fluorescence **NONE**

Inscription(s) **IGI LG797622010**

Comments: This Laboratory Grown Diamond was created by Chemical Vapor Deposition (CVD) growth process. Type IIa

PROPORTIONS



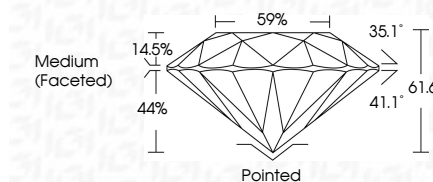
Sample Image Used

COLOR

D E F G H I J Faint Very Light Light

CLARITY

FL	IF	VS ¹⁻²	VS ¹⁻²	SI ¹⁻²	I ¹⁻³
Flawless	Internally Flawless	Very Very Slightly Included	Very Slightly Included	Slightly Included	Included



ADDITIONAL GRADING INFORMATION

Polish **EXCELLENT**

Symmetry **EXCELLENT**

Fluorescence **NONE**

Inscription(s) **IGI LG797622010**

Comments: This Laboratory Grown Diamond was created by Chemical Vapor Deposition (CVD) growth process. Type IIa



IGI



April 30, 2026
IGI Report No LG797622010
ROUND BRILLIANT

6.47 - 6.60 X 4.01 MM
1.04 CARAT
F
VS 1
IDEAL
61.6%
59%
Medium (Faceted)

Pointed
EXCELLENT
EXCELLENT
NONE
IGI LG797622010

Comments: This Laboratory Grown Diamond was created by Chemical Vapor Deposition (CVD) growth process. Type IIa