



**ELECTRONIC COPY**

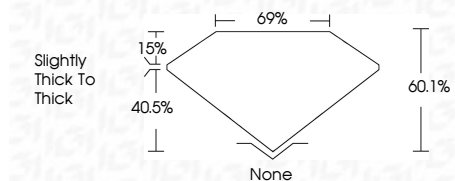
LG805663408  
Report verification at igi.org



May 29, 2026  
IGI Report Number **LG805663408**  
Description **LABORATORY GROWN DIAMOND**  
Shape and Cutting Style **MODIFIED OVAL STEP CUT**  
Measurements **11.36 X 7.76 X 4.66 MM**

**GRADING RESULTS**

Carat Weight **3.21 CARATS**  
Color Grade **E**  
Clarity Grade **VS 1**



**ADDITIONAL GRADING INFORMATION**

Polish **EXCELLENT**  
Symmetry **EXCELLENT**  
Fluorescence **NONE**  
Inscription(s) **IGI LG805663408**  
Comments: This Laboratory Grown Diamond was created by Chemical Vapor Deposition (CVD) growth process. Type IIa



May 29, 2026  
IGI Report No. LG805663408  
**MODIFIED OVAL STEP CUT**  
11.36 X 7.76 X 4.66 MM  
3.21 CARATS  
E  
VS 1  
60.1%  
69%  
Slightly Thick To Thick  
None  
EXCELLENT  
EXCELLENT  
NONE  
IGI LG805663408  
Comments: This Laboratory Grown Diamond was created by Chemical Vapor Deposition (CVD) growth process. Type IIa

**LABORATORY GROWN DIAMOND REPORT**

May 29, 2026  
IGI Report Number **LG805663408**  
Description **LABORATORY GROWN DIAMOND**  
Shape and Cutting Style **MODIFIED OVAL STEP CUT**  
Measurements **11.36 X 7.76 X 4.66 MM**

**GRADING RESULTS**

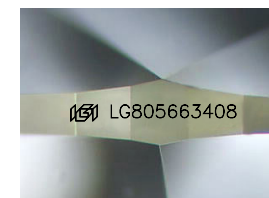
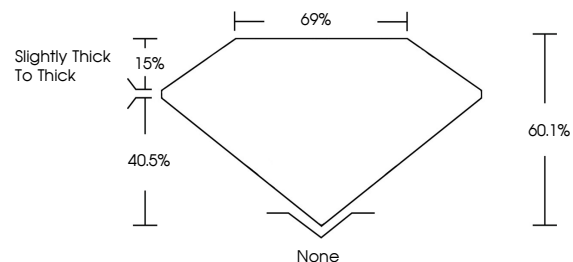
Carat Weight **3.21 CARATS**  
Color Grade **E**  
Clarity Grade **VS 1**

**ADDITIONAL GRADING INFORMATION**

Polish **EXCELLENT**  
Symmetry **EXCELLENT**  
Fluorescence **NONE**  
Inscription(s) **IGI LG805663408**

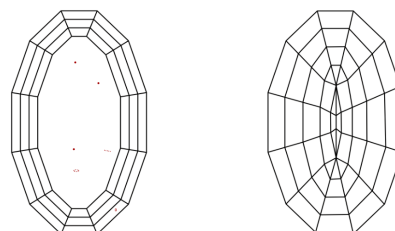
Comments: This Laboratory Grown Diamond was created by Chemical Vapor Deposition (CVD) growth process. Type IIa

**PROPORTIONS**



Sample Image Used

**CLARITY CHARACTERISTICS**



**KEY TO SYMBOLS**

Red symbols indicate internal characteristics.  
Green symbols indicate external characteristics.

**COLOR**

D E F G H I J Faint Very Light Light

**CLARITY**

FL	IF	VS <sup>1-2</sup>	VS <sup>1-2</sup>	SI <sup>1-2</sup>	I <sup>1-3</sup>
Flawless	Internally Flawless	Very Very Slightly Included	Very Slightly Included	Slightly Included	Included

